

TO THE KNOWLEDGE ON *METAPOCYRTUS* HELLER, 1912 (COLEOPTERA: CURCULIONIDAE: PACHYRHYNCHINI) SPECIES FROM SIBUYAN ISLAND, WITH DESCRIPTION OF NEW SPECIES

Anita Rukmane-Bārbale

Rukmane-Bārbale A. 2023. To the knowledge on *Metapocyrtus* Heller, 1912 (Coleoptera: Curculionidae: Pachyrhynchini) species from Sibuyan Island, with description of new species. *Baltic J. Coleopterol.*, 23(2): 275 - 282.

One new species of the tribe Pachyrhynchini of the genus *Metapocyrtus* Heller, 1912 (Coleoptera: Curculionidae: Pachyrhynchini) from the Sibuyan Island, Romblon, Philippines is described and illustrated: *M. romblonensis* sp. nov. Fauna and photographs of *Metapocyrtus* Heller, 1912 from Sibuyan Island is presented.

Key words: Coleoptera, Curculionidae, Pachyrhynchini, *Metapocyrtus*, taxonomy, Philippines, fauna, Sibuyan Island

Anita Rukmane-Bārbale. Daugavpils University, Institute of Life Sciences and Technology, Coleopterological Research Center, Vienības Str. 13, Daugavpils, LV-5401, Latvia; e-mail:anita.rukmane@du.lv

INTRODUCTION

The Pachyrhynchini fauna of Sibuyan Island currently is represented by six species of two genera. Two species of the genus *Pachyrhynchus* Germar, 1824: *P. noeli* Yoshitake, 2019, *P. naokae* Yoshitake, 2019 (Yoshitake, 2019, Rukmane, 2019) and four species of the genus *Metapocyrtus* Heller, 1912: *M. (Trachycyrtus) vestitus* Schultzze, 1925, *M. (Metapocyrtus) puncticollis* Heller, 1912, *M. (Metapocyrtus) sibuyanensis* Schultzze, 1925, *M. (Metapocyrtus) striatus* Heller, 1912 (Heller, 1912, Schultzze, 1925).

During my research on fauna of Pachyrhynchini available at DUBC, one species of the genus *Metapocyrtus* Heller, 1912 from Sibuyan Island appeared to differ

from all known representatives, this species is described as new in this paper.

MATERIAL AND METHODS

The study was based on specimens deposited at the Daugavpils University Beetle Collection (DUBC), Daugavpils, Latvia and Senckenberg Natural History Collections (MTD), Dresden, Germany.

The laboratory research and measurements have been carried out using Nikon SMZ 745T and NIS-Elements 6D software. The illustrations were made using digital camera Canon EOS 6D with Canon MP-E 65mm macro lens, using stack shot system and Helicon Focus auto montage, subsequently was edited using Photoshop.

Label data are cited *verbatim*. In the text the following symbols and abbreviations were used:

/ = different lines;
 // = different labels;
 LB = body length, from apical margin of pronotum to the apex of elytra;
 LE = elytral length;
 LP = pronotal length;
 LR = length of the rostrum;
 WE = maximum width of the elytra;

WP = maximum width of the pronotum;
 WR = maximum width of the rostrum.

RESULTS

Diversity of *Metapocyrtus* Heller, 1912 species from Sibuyan Island:

M. (Trachycyrtus) vestitus Schultze, 1925 (Fig. 1)



Fig. 1. *M. (Trachycyrtus) vestitus* Schultze, 1925, Holotype, male (MTD).

Description (Schultze, 1925): "Black, with sparsely scattered pale-yellow wish scales. Elytra short, subovate, with indistinct longitudinal rows of minutely fine hairs and sparsely scattered scales. Rostrum densely confluent punctured, beset with fine whitish hair, basal half with a rather strongly pronounced medial depression and two irregular, sub rugose longitudinal ridges. Basal transverse groove confluent with a pit

like depression on sides, in front of eye, and the latter united with antennal scrobe. Front rugosely punctured with a sharply defined medial groove and some scattered scales. Prothorax sub globular, densely, and uniformly roundish granulate, sparsely scattered with yellowish scales. Legs dark brown, moderately densely beset with setae."

Material examined: 6 ex.: Male Type (Fig. 1) // Romblon Isl. / June 1904 / R.C. McGregor // Coll. W. Schultz / Ankauf 1942 // Staatl. Museum fur / Tierkunde Dresden // *Metapocyrtus* / *vestitus* ♂ / Det. W. Schultz / Type // (all from MTD).

***M. (Metapocyrtus) puncticollis* Heller, 1912**
(Fig. 2, 6A, C)



Fig. 2. *M. (Metapocyrtus) puncticollis* Heller, 1912, male (DUBC).

Description (Heller, 1912): “Black, prothorax with transverse spots on both

sides; elytra with three apical spots, interrupted on suture, of pearly-rosy scales; rostrum punctured, convex at base; median dorsal impression expanded anteroposterior; lateral impression ovate; prothorax punctured, scarcely rounded, widest just at the middle.

Material examined: 5 males, 6 females, all with the same locality label: “PHILIPPINES / Sibuyan, Romblon / IX. 2022 / local collector leg.” (DUBC).

***M. (Metapocyrtus) sibuyanensis* Schultz, 1925**
(Fig. 3)

Description (Schultz, 1925): “Black; prothorax and elytra scattered with very pale bluish or greenish white scales, forming on the latter in the middle an indistinct and irregular narrow transverse band. Prothorax coarsely and irregularly confluent punctured with sparsely scattered scales. Each elytron in the female at apex with a short, curved excision, but suture at apex strongly swollen, forming a distinct projection within the excisions.”

Relation: Related to *M. (M.) striatus* Heller, 1912, but can be distinguished by different sculpture of elytra and longer rostrum with less pronounced sculpture.

Material examined: Female Type (Fig. 3) // Island / Sibuyan / Baker // 18645 // 24.0 // Coll. W. Schultz / Ankauf 1942 // *Metapocyrtus* ♀ / *sibuyanensis* / Det. W. Schultz. / Type // Staatl. Museum fur / Tierkunde Dresden (MTD).

***M. (Metapocyrtus) striatus* Heller, 1912**
(Fig. 4)

Description (Heller, 1912): “Pronotum roughly dotted; with single round to elongated white scales dorsally on disc; anterior and posterior edge of pronotum with

sparse white scales; elytra with regular puncture rows and corresponding longitudinal rows of white scales.”

Relation: Related to *M. (M.) sibuyanensis* Schultze, 1925, but can be distinguished by different sculpture of elytra, presence of white longitudinal scale stripes on elytra and shorter rostrum with stronger sculpture.

Material examined: 3 males, 1 female: Male type (Fig. 4) // Acc No. 1990. / Lot / Govt.Lab.Coll // 1911 / 7 // Typus! / striatus // Collected by / R.McGregor. // Staatl. Museum für / Tierkunde Dresden // two males and one female with occurrence label: // Romblon Isl / C.M.Weber. // (all in MTD). (Fig. 5, 6B, D)



Fig. 3. *M. (Metapocyrtus) sibuyanensis* Schultze, 1925, Holotype, female (MTD).

***Metapocyrtus romblonensis* sp. nov.**

Type material. Holotype, male: “PHILIPPINES / Sibuyan, Romblon / IX. 2022 / local collector leg.” (white rectangular label, printed) // “HOLOTYPE / *M. romblonensis* / Rukmane-Bärbale, 2023” (red rectangular label, printed).

Paratypes: (1 male, 5 females) all with the same location label as holotype, with additional red label: “PARATYPE / *M. romblonensis* / Rukmane-Bärbale, 2023” (all in DUBC).



Fig. 4. *M. (Metapocyrthus) striatus* Heller, 1912, Holotype, male (MTD).

Description. Holotype, Male. (Fig. 5A) Dimensions: LB: 8,6, LR: 1,9, WR: 1,3, LP: 3,2, WP: 3,2, LE: 5,4, WE: 3,5. N = 1 for all measurements.

Coloration. Integument black. Body surface, rostrum, head, and underside moderately shiny, with markings of round, metallic, green to reddish scales.

Head. Dorsal surface and lateral sides without scally markings; surface between eyes with single white setae; genae covered with white to greenish shiny hair-like scales, increasing intensity to ventral surface; forehead flattish; moderate medial longitudinal furrow from base of the eyes to base of the forehead; transverse groove at the base of the eyes confluent with medial furrow; eyes medium-sized, moderately convex from outline of head.

Rostrum. Longer than wide (LR/WR: 1,46), moderately rugose on all length; basal half covered with white setae; finely punctured

on all length; without colourful scales; dorsum with deep medial furrow from base to anterior $\frac{1}{2}$ forming moderate medial concavity; in dorsal contour nearly straight; in lateral contour convex dorsally, with moderate dorsal bulge; moderate furrow from base of eye to antennal scape; ventral part covered with setae and longer, white hairs; lateral parts without puncture.

Antennae with antennal scape nearly same length as funicle, scape reaching beyond hind margin of eye; sparse setae at anterior half; funicular segment 1,5 times longer than II, segment II 1,5 times longer than III, segments III – VI as long as wide, segment VII wider than long, club sub-ellipsoidal, 2,5 times as long as wide.

Prothorax sub globular, as long as wide (LP/WP: 1), strongly punctured with sparse corresponding setae; widest just before the middle, moderately convex in dorsal view; with moderate medial longitudinal groove at

disc; with the following markings of round, metallic green to goldish, yellowish scales: two roundish dots medially at disc, each

redirected laterally; confluent anterior and posterior transverse groove at all length.

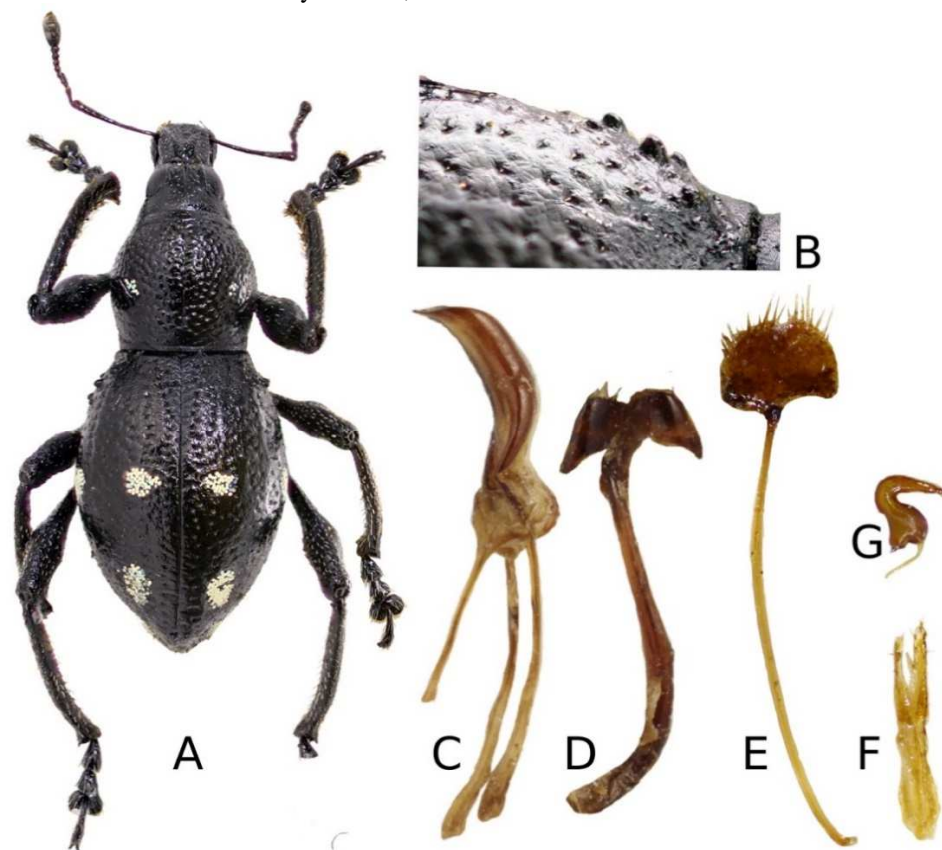


Fig. 5. Dorsal habitus of *M. romblonensis* sp. nov., male, holotype (A); B – growths at elytral shoulder; C – penis in lateral view; D – sternite IX in dorsal view; E – sternite VIII in dorsal view; F – ovipositor; G – spermatheca.

Elytra sub-ellipsoidal, (LE/WE: 1,54), slightly wider than prothorax and moderately longer than prothorax (WE/WP: 1,09; LE/WP: 1,68); striate punctate near suture, irregular puncture towards dorsolateral sides; in dorsal contour widest just at the middle, slightly convex; each elytron with the following scally markings of round, metallic green to goldish, yellow scales: 1) two roundish spots at medial part, one along intervals II to III, one redirected laterally; 2) two roundish spots at apical part along intervals II to III, one along apical $\frac{1}{2}$,

one redirected to apex; spots can vary in size from smaller to larger, some exemplars have two additional roundish spots at sub-basal part, one along intervals II to III, one redirected laterally; larger growths at each elytral shoulder that vary in number along individuals.

Femora covered with rare white to golden setae and hair-like scales in all length; femora, tibia and tarsus without scally markings; fore-tibia with longer, brownish setae that are more intense along internal

margin and towards anterior part and moderate denticles along internal margin; mid and hind tibiae with less dense setae, without denticles along internal margin. Male genitalia as shown in Fig. 5C, D.

Female. Elytra more ovate; genitalia as shown in Fig. 5E-G; spots on disc of prothorax redirected posteriorly, with additional transverse line of scales along anterior margin; disc of prothorax without longitudinal medial groove.

Differential analyses. *M. romblonensis* sp. nov. in general appearance is unique for

fauna of Sibuyan but can be related to *M. (M.) puncticollis* Heller, 1912 by general appearance and scally markings of metallic green colour. The new species can be distinguished by unique growths at each elytral shoulder, dorsally convex rostrum in lateral view that is widest at base (*M. romblonensis* sp. nov.) not at sub-apical part (*M. (M.) puncticollis* Heller, 1912) (Fig. 6C).

Distribution. Sibuyan Island, Romblon.

Etymology. The specific epithet is a toponym to the type locality to Romblon Island, Philippines.

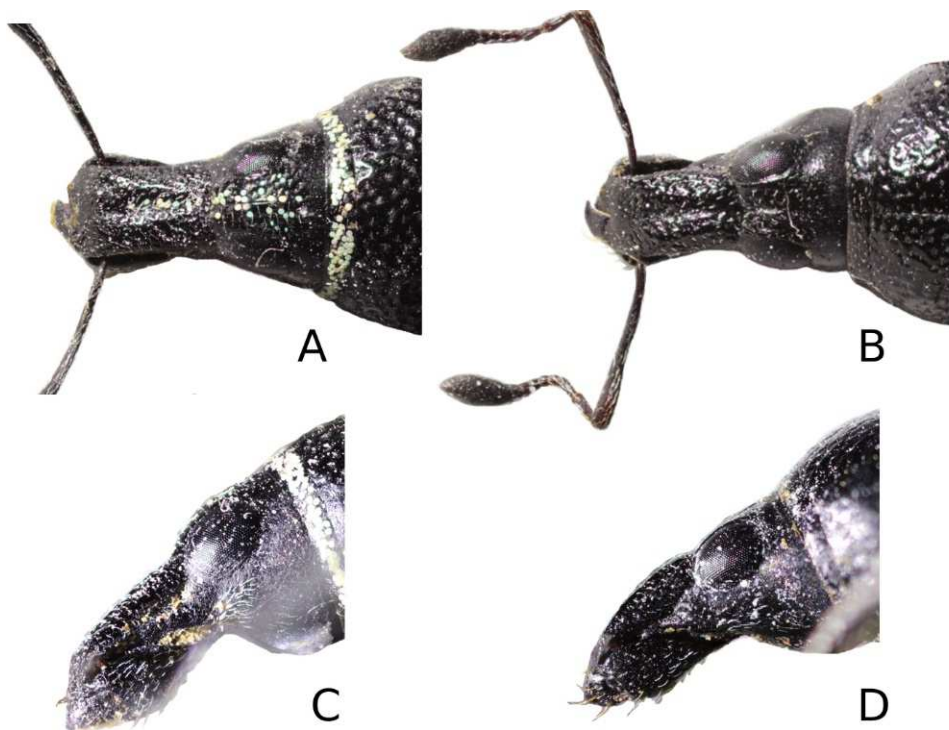


Fig. 6. Dorsal (A, B) and lateral (C, D) view of *M. (Metapocyrtus) puncticollis* Heller, 1912 (A, C) and *M. romblonensis* sp. nov. (B, D).

REFERENCES

Heller K. M. 1912. Philippinische Russelkafer. *The Philippine Journal of Science* 7(5): 295 – 402.

Rukmane A. 2019. To the knowledge of genus *Pachyrhynchus* Germar, 1824 (Coleoptera: Curculionidae: Pachyrhynchini) species from SMNH

- (Stockholm, Sweden), with description of a new species from the Sibuyan Island (Philippines). *Baltic. J. Coleopterol.*, 19(1): 41 – 50.
- Schultze W. 1925. A monograph of the pachyrrhynchid group of the Brachyderinse, Curculionidme: Part III. The genera Apocyrtidius Heller and Metapocyrtus Heller. *The Philippine Journal of Science* 26(2): 131 – 310.
- Yoshitake H. 2019. Three new species and a new subspecies of the jewel weevil genus *Pachyrrhynchus* Germar (Coleoptera: Curculionidae: Entiminae) from the Philippines. *Gekkan-Mushi*, 578: 36 – 43.

Received: 10.10.2023.

Accepted: 08.12.2023.