

Contribution to the knowledge of the genus *Lathrobium* Grav. (Coleoptera, Staphylinidae, Paederinae) of the Baikal region. I. Catalogue of species and a new synonymy

Alexey V. Shavrin

Shavrin A. V. 2007. Contribution to the knowledge of the genus *Lathrobium* Grav. (Coleoptera, Staphylinidae, Paederinae) of the Baikal region. I. Catalogue of species and a new synonymy. *Baltic J. Coleopterol.*, 7 (2): 173 - 178.

A catalogue of the species of the genus *Lathrobium* Grav. of the Baikal region is presented. The following synonymy is established: *L. mongolicum* Bohač, 1988 = *L. fraternum* Ryvkin, 1989 syn.n. The male sexual characters of *L. mongolicum* Bohač, 1988 are characterised and figured; the distribution is mapped.

Key words: Coleoptera, Staphylinidae, Paederinae, *Lathrobium*, Baikal region, catalogue, new synonym.

Alexey Shavrin, Siberian Institute of Plant Physiology and Biochemistry. Lermontova str., 132, 664033, Irkutsk, Russia; e-mail: ashavrin@hotmail.com
Web-site: <http://www.zin.ru/Animalia/Coleoptera/rus/shavrin.htm>

INTRODUCTION

In the Palaearctic region, the genus *Lathrobium* Gravenhorst of the subfamily Paederinae is represented by 248 species (six of which are *nomina dubia*) and subspecies (Smetana, 2004) in two subgenera. Previously, 49 species and subspecies were known from Russia, more than 80 % of which are known from Siberia and the Russian Far East. Thus, the knowledge of the *Lathrobium* fauna of these vast regions is still incomplete.

This paper presents a short history of the study of the genus *Lathrobium* in the Baikal region (within the administrative borders of Irkutsk and Chita Terr., Republic of Buryatia) and a catalogue of species known from this territory. A new synonymy for *L. mongolicum* Bohač is established,

and new records, diagnostic notes, and notes on the distributions of the species are given. The material referred to below is deposited in the author's private collection (cS).

HISTORICAL REVIEW

The first taxonomic paper relating to the *Lathrobium* fauna of the Baikal region is the description of *Lathrobium concolor* (as *L. concolore*) by Motschulsky (1860: 563) from Transbaikalia (environs of Kyakhta near the border of Mongolia). Based on the material collected by H. Leder in 1891, Eppelsheim (1893) published a paper on the fauna of the Irkut river valley and the environs of Munku-Sardyk mountain indicating 3 species: the newly described *L.*

viduum, as well as *L. sibiricum* Fauvel and *L. brunripes* (Fabricius). In his catalogue, Yakobson (1905-1913) compiled all previous and new data and indicated 6 species, of which *L. geminum* Kraatz and *L. fulvipenne* (Gravenhorst) are recorded for the Baikal region for the first time (based on the collection of A. I. Yakovlev (1863-1909)). More than 60 years later, Berlov (1977), in a publication focused on necrophilous beetles, indicated *L. brunripes* (Fabricius) for the environs of Irkutsk. Shilov & Shilenkov (1977) reported *L. fulvipenne* (Gravenhorst) for the Khamar-Daban Mts. Ryvkin (1989) described *L. lunini* from northern Cisbaikalia. In the same year, Ryvkin (1989a) described *L. fraternum* and redescribed *L. concolor* Motschulsky. During the last decade, 16 further species were added to the *Lathrobium* fauna of the region (Shavrin, 1998, 2000, 2001; Shavrin & al., 1999, 2001; Voincov, 2006). Shavrin (2006) listed 19 species three of these species are not identified at species level and are not included to catalogue below.

Thus, 16 *Lathrobium* species are reliably known from the Baikal region, representing 32.6% of all the species known from Russia.

CATALOGUE OF SPECIES OF LATHROBIUM OF BAIKAL REGION

Lathrobium (Apteralium) sibiricum Fauvel, 1875

=abbreviatum Solsky, 1876

Distribution: Ural, Siberia, Alaska

Lathrobium (s. str.) concolor Motschulsky, 1860

Distribution: Uzbekistan, Mongolia, Transbaikalia, Russian Far East

Lathrobium (s. str.) brunripes (Fabricius, 1793)

= dentatum (Marsham, 1802)

= fabricii (Turton, 1802)

= laticolle Machulka, 1923

= luteipes Fauvel, 1873

= punctatum (Geoffroy, 1785)

Distribution: Europe, European Russia, Crimea, Caucasus, Ural, Siberia, Far East

Lathrobium (s. str.) dimidiatipenne Bernhauer, 1910

Distribution: Crimea, south-west Russia, Turkey, south Cisbaikalia, Russian Far East, Mongolia

Lathrobium (s. str.) elongatum (Linnaeus, 1767)

= banghaasi Bernhauer, 1902

= fraudulentulum Ganglbauer, 1895

= nigrum Joy, 1906

= ochraceum Stephens, 1833

Distribution: Europe, European Russia, Iran, Turkey, Kazakhstan, Siberia

Lathrobium (s. str.) fulvipenne (Gravenhorst, 1806)

= alpestre Heer, 1839

= atriceps Stephens, 1833

= letzneri Gerhardt, 1870

= muelleri Bernhauer, 1899

= punctulatum Mannerheim, 1830

Distribution: Europe, European Russia, Crimea, Caucasus, Turkey, Kazakhstan, Uzbekistan, Ural, Siberia, Russian Far East (Amur Terr.), North America

Lathrobium (s. str.) geminum Kraatz, 1857

= bicolor Heer, 1839

= boreale Hochhuth, 1851

= boreale Thomson, 1860

= difficile Coiffait, 1853

= fallaciosum Coiffait, 1853

= obscuriceps Motschulsky, 1860

= volgense Hochhuth, 1851

= rufescens Motschulsky, 1860

Distribution: Europe, European Russia, Caucasus, Siberia, Primorye

Lathrobium (s. str.) impressum Heer, 1841

= filiforme Gravenhorst, 1806

= minarzi Bernhauer, 1927

= nebeli Hubenthal, 1911

= roebeni L. Benick, 1951

= suturale Wencker, 1866

Distribution: Europe, European Russia, Ural, Siberia

Lathrobium (s. str.) longulum longulum Gravenhorst, 1802

= hamatum Czwalina, 1888
= longipenne Fairmaire et Laboulbène, 1856
= minutum C. R. Sahlberg, 1830
= nanum Stephens, 1833
= patris G. Benick, 1950

Distribution: North and central Europe, European Russia, Crimea, Caucasus, Siberia, Russian Far East, Mongolia

***Lathrobium* (s. str.) lunini Ryvkin, 1989**

Distribution: North Cisbaikalia

***Lathrobium* (s. str.) methodii Ryvkin, 1987**

Distribution: East Siberia

***Lathrobium* (s. str.) molodovae Tikhomirova, 1969**

Distribution: East Siberia: Chita Terr.; Far East: Amur Terr.

***Lathrobium* (s. str.) mongolicum Boháč, 1988**

= fraternum Ryvkin, 1989, **syn. n.**

Distribution: South Cisbaikalia, Transbaikalia, Mongolia

***Lathrobium* (s. str.) poljarnis poljarnis Coiffait, 1972**

Distribution: West Siberia, Khamar-Daban Mts., north-east Siberia

***Lathrobium* (s. str.) sachalinensis Tikhomirova, 1969**

Distribution: Kemerovo Terr., south Cisbaikalia, Sakhalin, Primorye.

***Lathrobium* (s. str.) viduum Eppelsheim, 1893**

Distribution: Republic of Buryatia: Tunkinskaya valley, Transbaikalia.

NEW SYNONYMY

***Lathrobium mongolicum* Boháč, 1988**

= fraternum Ryvkin, 1989 **syn. n.**

Figs. 1-7.

Material examined. 2 males: **IRKUTSK Terr.**, Nizhneudinskij district, valley of Uda River, 5 km

S Vodopadnij, 22-23.06.1998, in forest litter near water, leg. A. Shavrin (cS); 3 males, 1 females: **CHITA Terr.**, valley of Chikoj River, Osinovka, 20-21.08.1998, agrocoenosis, leg. A. Shavrin (cS).

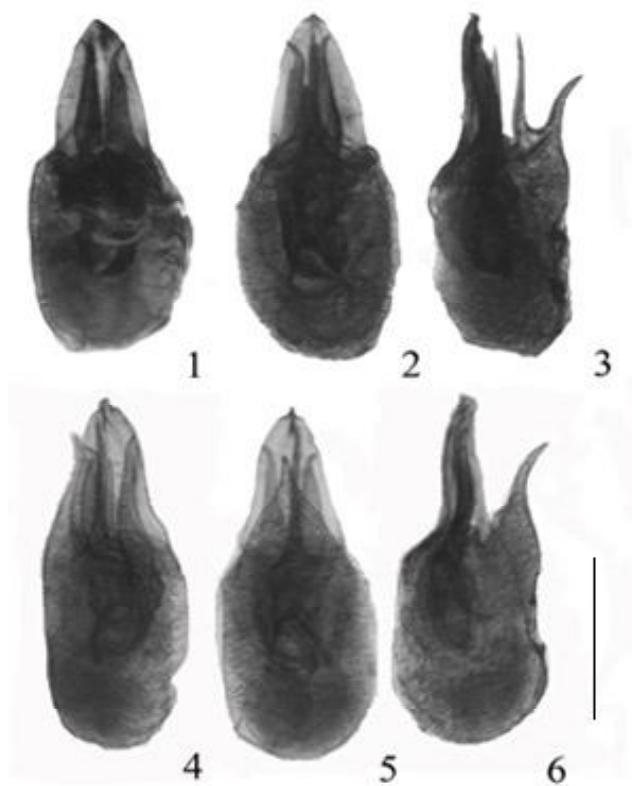
Remarks. The description of *L. mongolicum* by Boháč (1988) is based on one male from northern Mongolia (Tumenkogt). Ryvkin (1989a) described *L. fraternum* from the Republic of Buryatia (Vitim River, Bajsa) and northern Mongolia (East ajmak, somon Sumber, Numreg River). In both cases, the authors used Mongolian material of the entomologist K. Ulikpan (Ulan-Bator, Mongolia). In Cisbaikalia and southern Transbaikalia I collected series of males, whose primary sexual characters are identical to those illustrated in Ryvkin's and Boháč's papers. The morphological characters, too, are identical to those indicated in the descriptions. Thus, *L. fraternum* is here placed in the synonymy of the senior name *L. mongolicum*. The shape of the aedeagus is somewhat variable especially in teneral specimens; for illustrations see Figs. 4-6 and Boháč (1988: 436, figs. 22-23). Also the position of the ventral lamella, which is apically bifid, may vary; for comparison see Figs. 1-3 (male from Chita Terr.) and Fig. 1 in Ryvkin (1989).

Distribution. Up to today, only 12 specimens of *L. mongolicum* have become known. The species is distributed in steppe biotopes in the Baikal region (Fig. 7): in Cisbaikalia (valley of Uda R.), Republic of Buryatia (Bajsa), in south-western part of Chita Terr. (Chikoj R.), and in northern Mongolia (Tumencogt, Bolshoj Khingán Mts.).

Bionomics. All known material of *L. mongolicum* was collected at altitudes between 300-600 m, in steppe, steppe slopes and on the edge of forest in June and August.

ACKNOWLEDGEMENTS

The author is grateful to Volker Assing (Hannover, Germany) for valuable comments and for the correction of the English text of the manuscript.



Figs. 1-6: *Lathrobium mongolicum* Boháč (1-3 – aedeagus in 3 projections of male from Chita Terr.; 4-6 – aedeagus in 3 views of male from Irkutsk Terr.: 1, 4 – in ventral view, 2, 5 – in dorsal view, 3, 6 – in lateral view; Scale 0.25 mm.

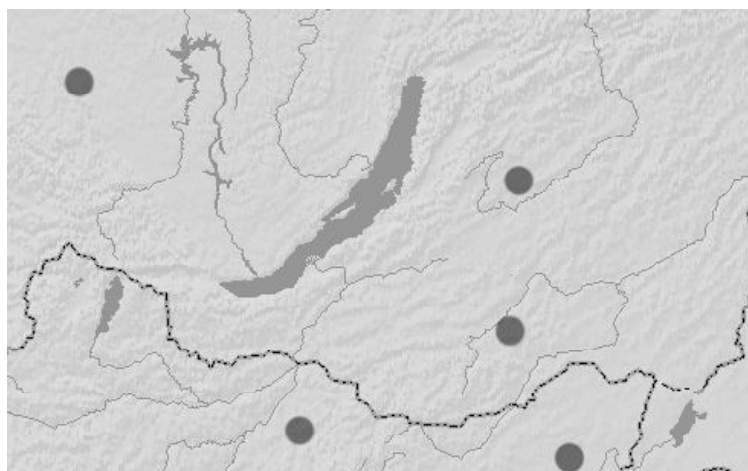


Fig. 7. Distribution of *Lathrobium mongolicum* Boháč in Baikal region and Mongolia.

REFERENCES

- Berlov E.Ya. 1977. [Necrophilous beetles of Irkutsk Territory]. In: Fauna and ecology of insects of East Siberia and Far East. Irkutsk. pp. 71-86. [in Russian].
- Bohač J. 1988. Descriptions of new species of the subfamily Paederinae (Coleoptera, Staphylinidae) from the Palaearctic region. Acta Entomologica Musei Nationalis Pragae. 85: 434-443.
- Eppelsheim E. 1893. Beitrag zur Staphyliniden-Fauna des südwestlichen Baikal-Gebietes. Deutsche Entomologische Zeitschrift 37: 17-67.
- Motschulsky V. 1860. Énumération des nouvelles espèces de coléoptères rapportées de ses voyages. 3-ième article. Bulletin de la Société Impériale des Naturalistes de Moscou 33(2): 539-588.
- Ryvkin, A.B. 1989. [To the knowledge of staphylinid beetles of subfamily Paederinae (Coleoptera, Staphylinidae) of Siberia and Mongolia]. Zoologicheskij Zhurnal 68 (6): 66-77 [in Russian, with Abstract in English].
- Ryvkin A.B. 1989a. [Status of *Lathrobium* (s.str.) *concolor* (Coleoptera, Staphylinidae) and two new species from Eastern Asia]. Zoologicheskij Zhurnal 68 (7): 81-88 [in Russian, with Abstract in English].
- Shavrin A.V. 1998. [To the knowledge of staphylinid beetles (Coleoptera, Staphylinidae) fauna of Baikal region]. In: Entomological problems of Baikalian Siberia. Novosibirsk. pp. 81-86 [in Russian, with Abstract in English].
- Shavrin A.V. 2000. [To the knowledge of staphylinid beetles (Coleoptera, Staphylinidae) fauna of southern parts of Buryatia and Chita territory]. In: Problems of Taxonomy, Ecology and Toxicology of Invertebrates. Irkutsk. pp. 73-79 [in Russian, with Abstract in English].
- Shavrin A.V. 2001. [To the knowledge of the fauna of staphylinid beetles (Coleoptera, Staphylinidae) of South Cisbaikalia]. Biodiversity of the Baikal Region 5: 80-96 [in Russian, with Abstract in English].
- Shavrin A.V. 2006. [About the catalogue of staphylinid beetles (Coleoptera, Staphylinidae) of the Baikal region]. In: Entomological studies in north Asia. Novosibirsk. pp. 162-163 [in Russian].
- Shavrin A.V., Shilenkov V.G., Gisatullin A.A. 2001. [The beetles (Coleoptera) of Vitimskij natural reserve]. Biodiversity of the Baikal Region 5: 100-107 [in Russian, with Abstract in English].
- Shavrin A.V., Shilenkov V.G., Veinberg I.V. 1999. [Fauna and ecology of Staphylinidae (Coleoptera) on the northern slope of Khamar-Daban Mts. in the southern Cisbaikalia]. Biodiversity of the Baikal Region 1: 26-42 [in Russian, with Abstract in English].
- Shilov V.F., Shilenkov V.G. 1977. [The rove beetles (Coleoptera, Staphylinidae) of south Cisbaikalia]. In: Fauna and ecology of insects of East Siberia and Far East. Irkutsk. pp. 62-70 [in Russian].
- Smetana A. 2004. Staphylinidae, subfamilies Omaliinae – Dasycerinae, Phloeocarinae – Apateticinae, Piesticinae – Staphylininae. In: I. Löbl & A. Smetana (Eds.), Catalogue of Palaearctic Coleoptera. II. Hydrophiloidea – Histeroidea – Staphylinioida. Appolo Books, Stenstrup. Pp. 593-598.
- Tikhomirova A.L. 1976. [New species of the genus *Lathrobium* Grav. (Coleoptera, Staphylinidae) of the fauna of USSR].

Entomologicheskoe Obozrenie 55 (3): 610-619.

Received: 02.06.2007.

Accepted: 20.09.2007.

Voincov A.A. 2006. [Zoogeographic analysis of the staphylinid fauna (Coleoptera, Staphylinidae) of the Selengean middle-altitude mountain land]. In: Entomological studies in north Asia. Novosibirsk. pp. 46-48 [in Russian].

Yakobson G.G. 1905-1913. [Beetles of Russia and west Europe]. St.-Petersburg. 1024 pp. [in Russian].