

## ***Thorictus kejvali* sp. n., a new species from Eastern India (Coleoptera: Dermestidae: Thorictinae)**

**Jiří Háva**

Háva J. 2009. *Thorictus kejvali* sp. n., a new species from Eastern India (Coleoptera: Dermestidae: Thorictinae). *Baltic J. Coleopterol.*, 9 (1): 31-34.

*Thorictus kejvali* sp. n. from India, Orissa state is described, illustrated and compared with related species. *Thorictus heimi wroughtoni* Wasmann, 1912 is newly recorded from India: Madhya Pradesh.

Key words: Coleoptera, Dermestidae, Thorictus, taxonomy, new species, new records, Oriental region.

Jiří Háva, Private Entomological Laboratory and Collection, Únětice u Prahy 37, CZ - 252 62 Praha-západ, Czech Republic; e-mail: [jh.dermestidae@volny.cz](mailto:jh.dermestidae@volny.cz)

### **INTRODUCTION**

The subfamily Thorictinae includes two tribes: Thorictini and Thaumaphrastini. The tribe Thorictini contains three genera: *Afrothorictus* Andreae, 1967, *Macrothorictus* Andreae, 1967 and *Thorictus* Germar, 1834. The genus *Thorictus* Germar, 1834 contains about 158 species and subspecies worldwide (Háva 2003, 2009). The first catalogue of the Thorictinae was published by Hetschko & Wasmann (1925); it was supplemented by Hetschko (1926, 1930).

The genus species distribution in the Oriental region was published by John (1961, 1963).

### **MATERIAL AND METHODS**

The size of the beetles or of their body parts can be useful in species recognition and thus, the following measurements were made:

total length (TL) - linear distance from anterior margin of head to apex of elytra.

pronotal length (PL) - maximum length measured from anterior margin to posterior margin.

pronotal width (PW) - maximum linear transverse distance.

elytral length (EL) - linear distance from shoulder to apex of elytron.

elytral width (EW) - maximum linear transverse distance.

Male genitalia not studied. Differential diagnoses of aedeagi are often problematical and interspecific variation is currently very poorly defined (John, 1963). The two species groups stated by John (1963).

Separate labels are indicated by slashes ( \ ). Remarks of the author are found in square brackets [ ].

**Acronyms:**

HNHM Hungarian Natural History Museum, Budapest, Hungary;

JHAC author's collection;

MCSN Museo Civico di Storia Naturale „G. Doria“, Genova, Italy.

**RESULTS*****Thorictus kejvali* sp. n.**

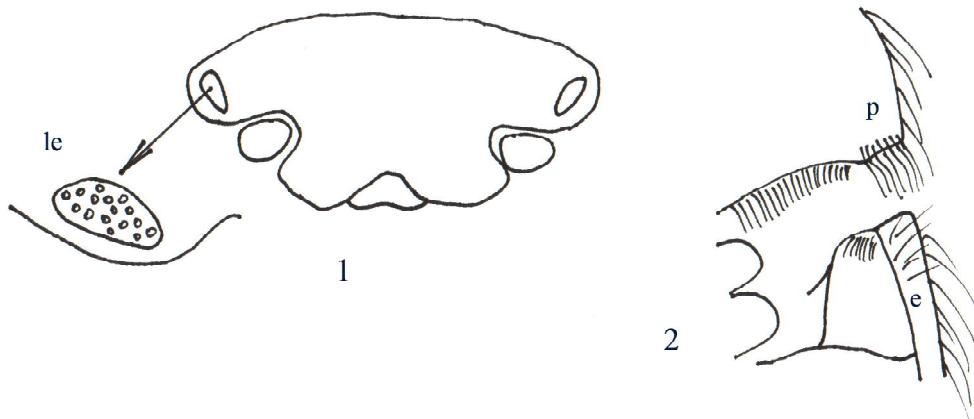
(Figs 1-2)

**Type material.** Holotype: E India, Orissa state, Jaleswar env., 30 km NE of Balasore, bank of river, 13.ii.1994, Z. Kejval lgt. Holotype deposited in the (JHAC). Specimen of the presently described species are provided with a red, printed label with text as follows: „HOLOTYPE *Thorictus kejvali* sp. n. Jiří Háva det. 2009”.

**Description of holotype.** Body small, dark brown, covered by very long, erected brownish setae on dorsal surfaces and decumbent on ventral surfaces. Measurements (mm): TL 2.30 PL 0.97 PW 1.15 EL 1.37 EW 1.20. Head (Fig. 1) finely

punctate with long, brownish setae. Labial palpi entirely brown. Antennae brown, with 11 antennomeres, antennal club compact, with 3 antennomeres. Pronotum as finely punctate as head, covered by short brownish setation. Lateral margin of pronotum very finely dentate. Pronotum in posterior part near scutellum without bumps. Ventral posterior pronotal angles with long, golden-yellowish setation (Fig. 2). Scutellum not visible from above. Elytra very finely punctate, with long brownish setae. Each elytron in anterior part near scutellum without bump. Epipleuron finely punctate. Prosternum finely punctate. Mesosternum with foveolate punctures. Metasternum finely punctate. Visible abdominal sternites very finely punctate, covered by very long, brownish setae. Legs brown, covered by yellow setae.

**Differential diagnosis.** The new species belongs to the *T. orientalis* species group; according to the body form and dorsal setation it is very similar to *T. heimi heimi* but differs from it by the shape of the head and pronotal ventral setation; from *Thorictus heimi wroughtoni* it differs by the setation of dorsal surfaces, shape of the head and pronotal ventral setation.



Figs 1-2. *Thorictus kejvali* sp. n. (holotype): 1- head anterior view; 2- pronotum and epipleuron ventral view; (le - lateral pronotal eyes; p - pronotum; e - epipleuron).

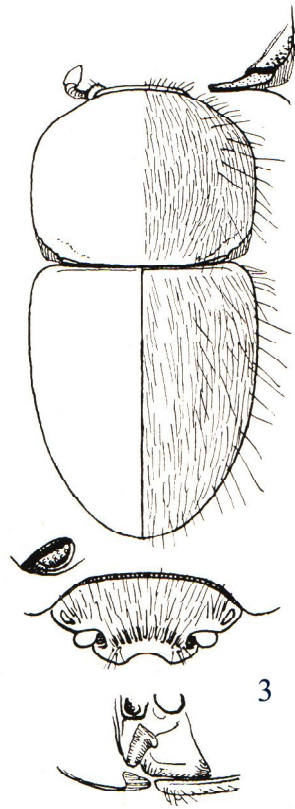


Fig. 3. *Thorictus heimi heimi* Wasmann, 1899 (orig. according to John).

**Name derivation.** Patronymic, the species name is dedicated to Zbyněk Kejval (Domažlice, Poland), collector of the new species.

***Thorictus heimi wroughtoni* Wasmann, 1912**

**Material examined.** „INDIA, Maharashtra, 25 km from Poona on the way to Aurangabad, Gy. Topál lgt.” \ „No. 612, singled material, 7.viii.1967”, 2 exx., (HNHM, JHAC); „INDIA, Madhya Pradesh, hilly area near town, south of Jabalpur, Gy. Topál lgt.” \ „No. 258, singled material, 24.iii.1967”, 1 ex., (HNHM).

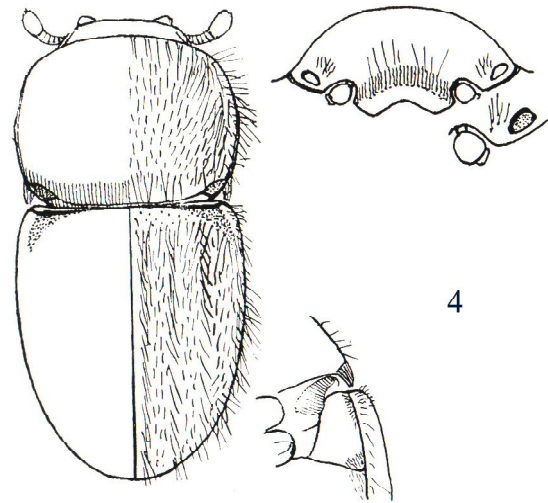


Fig. 4. *Thorictus heimi wroughtoni* Wasmann, 1912 (orig. according to John).

**Distribution.** A subspecies known from India: Wallon (Ahmadnagar, Maharashtra), new to Madhya Pradesh.

***Thorictus feae* Grouvelle, 1897**

**Type material.** Holotype: „Mandalay, Birmania, Fea, xi.1885“ \ “TYPUS” [printed, red] \ “*Solenopsis geminata* F. [handwritten label] \ “*Thorictus Feae* n.” [handwritten label]. Holotype deposited in (MCSN).

**Distribution.** Known from Myanmar only.

**Catalogue of all the known Oriental species**

***Thorictus braminus* Wasmann, 1912**

Host ant: *Pheidole* sp., *Prenolepsis* sp.: Hetschko, 1926.

Distribution: India: Wallon (Ahmadnagar, Maharashtra).

***Thorictus feae* Grouvelle, 1897**

Host ant: *Solenopsis geminata* F.

Distribution: Myanmar.

***Thorictus heimi heimi* Wasmann, 1899**

Host ant: *Prenolepis* sp., *Pheidole* sp.,  
*Triglyphothrix* sp.: Hetschko, 1926.  
Distribution: India: Wallon (Ahmadnagar).

***Thorictus heimi wroughtoni* Wasmann, 1912**

Host ant: *Pheidole* sp.: Hetschko, 1926.  
Distribution: India: Wallon (Ahmadnagar,  
Madhya Pradesh\*, Maharashtra).

***Thorictus indicus* John, 1963**

Syn.: *Thorictus indicus* Grouvelle (un).  
Distribution: England (intr.); India: Karnataka,  
Kerala; Myanmar.

***Thorictus kejvali* sp. n.**

Distribution. India: Orissa state

***Thorictus nilgiriensis* John, 1963**

Distribution: India: Nilgiri Hills.

Hetschko A. 1930: Coleopterorum Catalogus. Pars  
109 - Cucujidae, Thorictidae (Suppl.),  
Cossyphodidae (Suppl.). In: Junk W. &  
Schenkling S. (eds.): Coleopterorum  
Catalogus. Berlin: W. Junk, 122 pp. + 2 pp. no  
numbered

Hetschko A. & Wasmann E. 1925: Übersicht der  
Thorictidae mit Angabe der Wirte. *Wiener  
Entomologische Zeitung* 42: 183-189.

Received: 20.02.2009.

Accepted: 25.03.2009.

## ACKNOWLEDGEMENTS

I grateful to Zbyněk Kejval (Domažlice, CZ), for  
the possibility to study their interesting material  
of Dermestidae, to J. Sklodowski (Warszaw,  
Poland) and M. Rakovič (Prague, CZ) for the  
language revision of the manuscript.

## REFERENCES

Háva J. 2003: World Catalogue of the  
Dermestidae (Coleoptera). *Studie a Zprávy  
Oblastního Muzea Praha-východ  
v Brandýse nad Labem a Staré Boleslavi*,  
Supplementum 1: 1-196.

Háva J. 2009: Dermestidae World (Coleoptera).  
Permanent World Wide Web electronic  
publication (open in 2004): [http://  
www.dermestidae.wz.cz](http://www.dermestidae.wz.cz)

Hetschko A. 1926: Coleopterorum Catalogus.  
Pars 83 - Thorictidae, Catopochrotidae,  
Monoedidae, Synteliidae, Cossyphodidae.  
In: Junk W. & Schenkling S. (eds.):  
Coleopterorum Catalogus. Berlin: W. Junk,  
15 pp.