

New species of the genus *Donus* Jekel (Coleoptera, Curculionidae) from Tuva

Andrei A. Legalov

Legalov A.A. 2008. New species of the genus *Donus* Jekel (Coleoptera, Curculionidae) from Tuva. *Baltic J. Coleopterol.*, 8 (1): 55 - 58.

A new species *Donus hertshensis* sp.n. from Tuva similar to *D. burjaticus* Korotyaev, 1998 from East Sayan mountains is described.

Key words: Coleoptera, Curculionoidea, Curculionidae, Hyperini, *Donus*, new species, Siberia.

Andrei A. Legalov. Zoological Museum, Institute of Animal Systematics and Ecology, Siberian Branch, Russian Academy of Sciences, Frunze street-11, Novosibirsk 630091 Russia; e-mail: legalov@ngs.ru

INTRODUCTION

The Tribe Hyperini Marseul, 1863 is one of the weevil beetles (family Curculionidae) more poorly studied. Many species of this tribe have a reduced geographic distribution. The tribe system requires revision. Genera *Antidonus* Bedel, 1886, *Donus* Jekel, 1865, *Eremochorus* Zaslavskij, 1962, *Macrotarrhus* Bedel, 1906, *Metadonus* Capiomont, 1868, *Orthodonus* Zaslavskij, 1965, *Hypera* Germar, 1817, *Limobius* Schoenherr, 1843 and *Coniatus* Germar, 1817 live in Siberia. Nine species of the genus *Donus* are known from Siberia (Boheman, 1840; Capiomont, 1867-1868; Csiki, 1934; Heyden, 1880-1881; Krivets, Korotyaev, 1998; Legalov, 1997a, 1997b, 1999a, 1999b; Petri, 1901; Zaslavskij, 1979). These are *D. burjaticus* Korotyaev, 1998 from Buryatiya, *D. cupreus* (Legalov, 1997) from West Altai, *D.*

deportatus (Boheman, 1840) from West Siberia, *D. dudkoi* Legalov, 1999 from Kuznetskii Alatau, *D. janae* Legalov, 1999 from West Altai, *D. lepidus* (Capiomont, 1868) from Ural and South Siberia, *D. mniszehi* (Capiomont, 1867) from Altai, *D. opanassenkoi* (Legalov, 1997) from West Siberia and *D. sajanicus* Korotyaev, 1998 from West Sayan and Altai. In this paper, a new species collected by the Siberian entomologists in mountains of Tuva is described.

MATERIAL AND METHODS

Type specimens are kept in the ZMN = Zoological Museum, Institute of Animal Systematics and Ecology (Russia: Novosibirsk).

RESULTS

Family Curculionidae Latreille, 1802

Subfamily Hyperina Marseul, 1863

Tribe Hyperini Marseul, 1863

Subtribe Macrotarrhusina Legalov, 2007

Genus *Donus* Jekel, 1865

Donus Jekel, 1865: 562

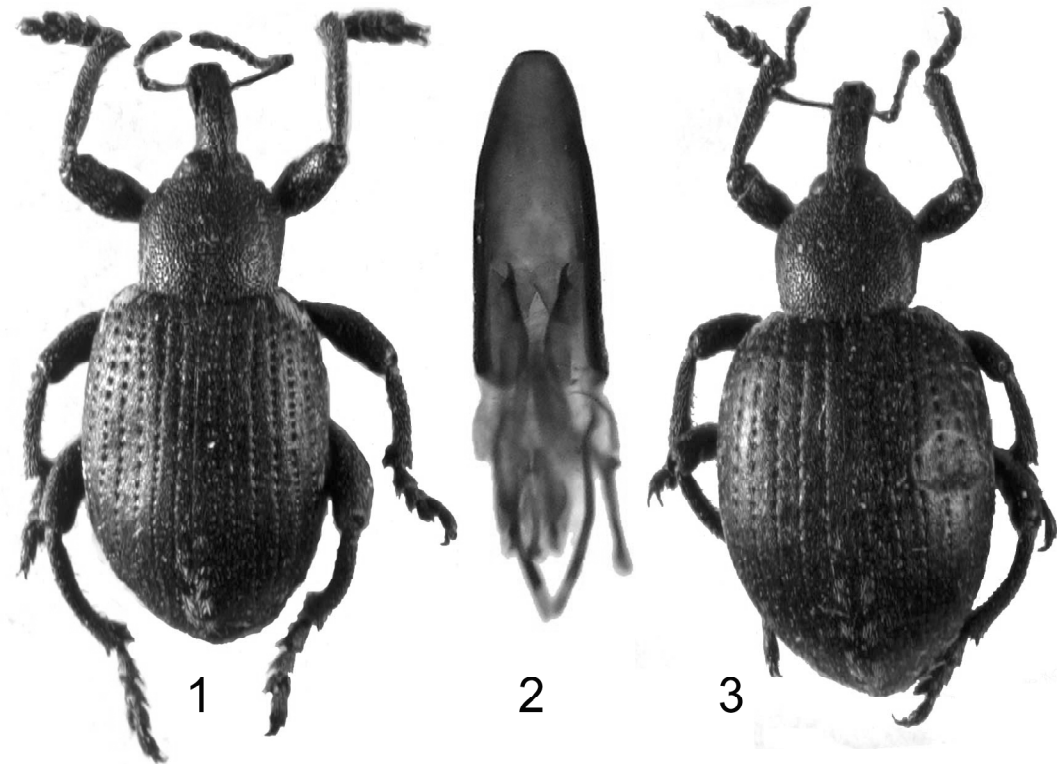
Type species: *Rhynchaenus philanthus* Olivier, 1807

Donus hertshensis Legalov, sp.n. (figs. 1-3)

Holotype. Male (ZMN), Tuva, Akademika Obrucheva Mts., Hertsh-Taiga Mtn., 25 km NNE of Kyzyl, 2200-2400 m, tundra, 19-21.VI.2001, R. & A. Dudko, I. Ljubechansky. **Paratype.** Female (ZMN), idem.

Description. Body length 6.5 mm. Body black, with rarely piliform scales. Light scales form two longitudinal strips on sides of the pronotum, stain on humeri, stains on 1st interval of the elytra in the top quarter, it condensed on meso- and metathorax, episternum and abdomen.

MALE: Rostrum short, thick, weakly curved, with middle carina, largely punctate, smooth at apex, 2.73 times as long as wide, 1.1 times as short as pronotum. Antennae located in topmost quarter of rostrum. Forehead narrow, flat, punctate. Eyes large, weakly convex. Temples short. Antennae long. Scapus long, not reaching the little eyes. First and 2nd segments long trapezoid, 3rd and 4th shortly trapezoid, 5th and 6th triangular, 7th wide triangular. Clava compact, fusiform. Pronotum 1.24 times as wide as long, back trapezoid, with the greatest width before the apex,



Figs. 1-3. *Donus hertshensis* (dorsally): 1 - male, 2 - aedeagus, 3 - female.

lustrous, densely punctate, punctures small. Sides almost straight. Scutellum very small, elongated. Elytra long oval, 1.35 times as long as wide. Humeri weakly convex. Greatest width on the middle. Intervals wide, flat, densely punctate. Striae deep. Points in striae large. Thorax and abdomen with small punctures. Coxal cavity located on the prothorax middle. Metepisternum narrow. Abdomen weakly convex. Legs long. Femora widened. Tibiae weakly biconcave, expanded at apex, on internal edge with aciculiform setae. Protibiae with mucro. Tarsi long. Protarsi shorter and wider than meso- and metatarsi. First and 2nd segments of protarsi wide triangular, 3rd segment wide bilobed. Clausal segment elongated. Claws long. First segment of mesotarsi triangular, 2nd segment wide triangular, 3rd segment wide bilobed. First segment of metatarsi long triangular, 2nd segment triangular, 3rd segment bilobed.

FEMALE: Body length 7.1 mm. Similar characteristics to those described in the male but rostrum thinner, 3 times as long as wide, 1.23 times as short as pronotum. Pronotum extends to apex more weakly, 1.13 times as wide as long. Elytra wider and more strongly convex, 1.34 times as long as wide. Abdomen stronger convex.

Diagnosis. This new species is similar to *Donus burjaticus* Korotyaev, 1998 from East Sayan mountains but can be distinguished by the more rarely scales on dorsal surface, more thin rostrum, narrower forehead, narrower pronotum with stronger widened to apex, wider apex of the aedeagus.

Etymology. The name is related to the type locality "Hertesh-Taiga Mtn."

Distribution. Siberia (Tuva).

ACKNOWLEDGEMENTS

I wish to thank Mr. A. Dudko (Tyumen), Dr. R. Dudko (Novosibirsk), Dr. B. Korotyaev (S.-Petersburg), Dr. I. Ljubechansky (Novosibirsk) and Dr. L. Hobrakova (Ulan-Ude) for their help with the work.

REFERENCES

- Boheman C.H. 1840. In Schoenherr C.J. 1840. Genera et species Curculionidum. Paris 6(1). 474 pp.
- Capiomont G. 1867-1868. Révision de la tribu des Hypérides, Lacordaire, et en particulier des genres *Hypera* Germ., *Limobius* Schönh. et *Coniatus* (Germ.) Schönh. renfermant la description de plusieurs genres nouveaux et de 85 especes nouvelles. Annales de la Société entomologique de France 64: 416-560, 73-286.
- Csiki E. 1934. Curculionidae: Subfam. Hyperinae. Coleopterorum Catalogus auspiciis et auxilio W. Junk 137: 3-66.
- Heyden L. 1880-1881. Catalog den Coleopteren von Sibirien mit Einschluss derjenigen der Turanischen Länder, Turkestans und der chinesisches Grenzgebiete. Berlin. 224 s.
- Jekel. H. 1865 (1864). Recherches sur la classification naturelle des Curculionides. Ire partie. Annales de la Société entomologique de France (4)4(3): 537-566.
- Krivets S.A., Korotyaev B.A. 1998. New and little known weevils (Coleoptera: Apionidae, Curculionidae) from Southern Siberia. Revue d'Entomologie 77(4): 836-859. (in Russian).
- Legalov A.A. 1997a. Eine neue Art der Gattung *Glanis* Jekel, 1864 (Coleoptera, Curculionidae, Hyperinae) aus Sibirien. Bulletin de l'institut royal des sciences naturelles de Belgique, Entomologie 67: 119-121.
- Legalov A.A. 1997b. Neue Taxone den Familien Apionidae und Curculionidae der Russelkafer (Coleoptera) aus Sibirien. Entomologica Basiliensia 20: 467-476.
- Legalov A.A. 1999a. Neue Ruesselkaferarten (Coleoptera, Curculionidae) von Sibirien und

Kasachstans. Entomologica Basiliensia 21:
375–384.

Received: 25.02.2008.

Accepted: 30.05.2008.

Legalov A.A. 1999b. Two new species of the genus *Donus* Jekel (Coleoptera, Curculionidae, Hyperinae) from the mountains of S-Siberia. Bulletin de l'institut royal des sciences naturelles de Belgique, Entomologie 69: 283–287.

Petri K. 1901. Monographie des Coleopteren-Triibus Hyperini. Abhandlungen des Siebenbürgisches Vereines für Naturwissenschaften zu Hermanstadt 2: I-IV+1-210.

Zaslavskij V.A. 1979. Novyi vid dolgonosika iz Zapadnogo Sayana (Coleoptera, Curculionidae). Novye vidy nasekomykh. Leningrad: Nauka: 86-90. (in Russian).