

## On the identity of *Lobrathium indubium* (Eppelsheim, 1893) (Coleoptera, Staphylinidae, Paederinae)

Alexey V. Shavrin

Shavrin A.V. 2008. On the identity of *Lobrathium indubium* (Eppelsheim, 1893) (Coleoptera, Staphylinidae, Paederinae). *Baltic J. Coleopterol.*, 8(2): XX - XX.

A new synonymy in *Lobrathium* Mulsant & Rey is established: *L. indubium* (Eppelsheim, 1893) = *L. altaicum* (Coiffait, 1967) syn. n.

Key words: Coleoptera, Staphylinidae, Paederinae, *Lobrathium*, East Palaearctic, taxonomy, new synonym.

Alexey Shavrin, Siberian Institute of Plant Physiology and Biochemistry. Lermontova str., 132, 664033, Irkutsk, Russia; e-mail: ashavrin@hotmail.com  
Web-site: <http://www.zin.ru/Animalia/Coleoptera/rus/shavrin.htm>

### INTRODUCTION

The genus *Lobrathium* Mulsant & Rey belongs to the subfamily Paederinae and it is represented by 68 species in three subgenera in the Palaearctic region (Assing, 2007).

Two species are known for the fauna of Siberia: *L. (Lobrathium) altaicum* (Coiffait, 1967) and *L. (L.) indubium* (Eppelsheim, 1893).

*L. altaicum* was described in *Platydomene* Ganglbauer by Coiffait (1967) from material collected in the Altai (Tchoula, Mejtoueryk). Subsequently, it was recorded for the Tunkinskie Goltzy [Tunkinskiy mountain range], Tubota mountain (1200 m) of East Sayan (Schülke, 1990) and for South Primorye (Assing, 2007). The original description of *L. indubium* (is based on two females from the valley of Irkut River (Eppelsheim, 1893).

During my visit to the Naturhistorisches Museum (Wien) in April-May 2008 I examined the type material of *L. indubium*, but did not find any morphological characters separating it from *L. altaicum*.

### ABBREVIATIONS

The examined specimens are kept in the following collections: NMW - Naturhistorisches Museum, Wien (H. Schillhammer); ISU – Irkutsk State University, Irkutsk (V. Shilenkov).

### RESULTS

***Lobrathium indubium*** (Eppelsheim, 1893) (Figs. 1-3)  
= *L. altaicum* (Coiffait, 1967) **syn.n.**

**Type material examined.** Syntypes: 1 ♂: “Ost-Sibirien Quellgebiet des Irkut. Leder 1891 [handwritten] / c. Eppelsh. Steind. d. / indubium Epp. / indubium Epp. Deutsch. Ent. Z. 1893. P. 52 / TYPUS [red label] / Lectotypus ♂ & Lathrobium indubium Eppelsheim V. Gusarov des. 1992 [red label; handwritten] / ♂ & Lobrathium indubium (Epp.) V.I. Gusarov det. 1992” (NMW); 1 ♂: “Ost-Sibirien Quellgebiet des Irkut. Leder 1891 [handwritten] / c. Eppelsh. Steind. d. / indubium Epp. / TYPUS [red label] / Paralectotypus ♂ & Lathrobium indubium Eppelsheim V. Gusarov des. 1992 [red label; handwritten] / ♂ & Lobrathium indubium (Epp.) V.I. Gusarov det. 1992 (NMW).

Lazovskiy and Ussuriyskiy nature reserves, South Primorye (Assing, 2007).

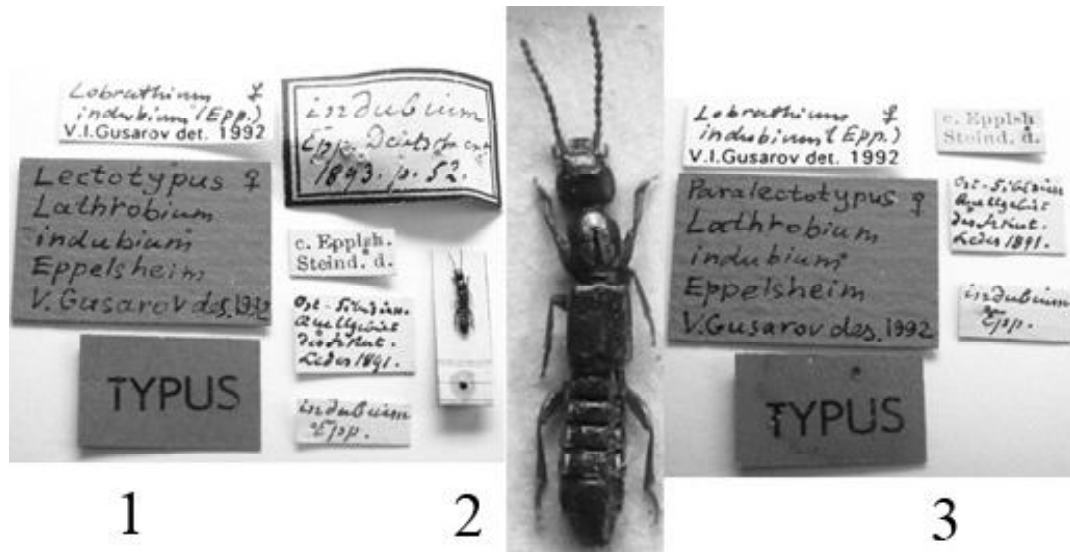
**Remarks.** One of the two syntypes was labelled by Vladimir Gusarov as the lectotype, but this designation was never published. Since both syntypes are females and doubtlessly conspecific, a lectotype designation is not deemed necessary. The shape of the aedeagus of the male from Arshan (Tunkinskie Goltzy) is identical to the illustrations given by Coiffait (1967) in the description of *L. altaicum*. Therefore, *L. altaicum* is here placed in the synonymy of the senior name *L. indubium*.

**Additional material examined.** 1 B&, 1 ♂ &: **REPUBLIC OF BURYATIA:** Tunkinskiy mountain range, Arshan spa, 19.08.1983, V. Shilenkov (ISU).

**ACKNOWLEDGEMENTS**

I wish to thank the following colleagues for making material available for study: H. Schillhammer (Vienna, Austria) and V. Shilenkov (Irkutsk, Russia). I grateful to Georges Coulon

**Distribution:** Altai, East Sayan (Tunkinskiy Mts.). Recently, the species was recorded from



Figs. 1-3: *Lobrathium indubium* (Eppelsheim) (1 – labels first syntype; 2 – habitus of first syntype; 3 – labels of second syntype.

(Slavonice, Czech Republic) for the correction of the English text of the manuscript. Special thanks are due to V. Assing (Hannover, Germany) for his comments, suggestions and help with the correction of English text.

*Received: 02.11.2008.*

*Accepted: 01.12.2008.*

## REFERENCES

- Assing V. 2007. A revision of Palearctic *Lobrathium* Mulsant & Rey. III. New species, new synonyms, and additional records (Coleoptera: Staphylinidae: Paederinae). *Linzer biologische Beiträge* 39 (2): 731-755.
- Coiffait H. 1967. Nouveaux Staphylinidae (sensu lato) d'Asie centrale. *Bulletin de la Société d'Histoire Naturelle de Toulouse* 103: 352-357.
- Eppelsheim E. 1893. Beitrag zur Staphyliniden-Fauna des südwestlichen Baikal-Gebietes. *Deutsche Entomologische Zeitschrift* 37: 17-67.
- Schülke M. 1990. Zwei neue Lathrobii aus Transkaukasien (Coleoptera, Staphylinidae: Paederinae) nebst faunistischen Bemerkungen zu bekannten Arten. *Novius* 10 (2): 217-224.

