

Notes on the distribution record of the genus *Anoplophora* Hope, 1839 (Coleoptera: Cerambycidae) in Asia

Arvīds Barševskis, Analyn Anzano Cabras, Milton Norman Medina, Janreve Odango, Treaseur Susulan, Daffa Muhammad Rifqi, Afnan Sa'ud Hanifuddin, Gabriella Tarida Kurnitami, Zeltīte Barševska, Katerina Lecka

Barševskis A., Cabras A.A., Medina M.N., Odango J., Susulan T., Rifqi D.M., Hanifuddin A.S., Kurnitami G.T., Barševska Z., Lecka K. 2022. New data on the distribution of the genus *Anoplophora* Hope, 1839 (Coleoptera: Cerambycidae). *Baltic J. Coleopterol.*, 22 (1): 149–173.

This article provides new distribution records of the twenty seven species of the genus *Anoplophora* in Asia based on the beetle collection at the Coleopterological Research Center of Daugavpils University, Latvia. *Anoplophora zonator* (Thoms.) is recorded for the first time in Vietnam. In the Philippines, the following distribution records are newly set, *A. tianaca* (Schultze) in Negros island, *A. sebastieni* (Duranton) in Luzon island, an additional data since its species description, and *A. asuanga* (Schultze) in Leyte and Samar islands.

Key words: longhorn beetles, Anoplophora, fauna, distribution, Oriental region

Arvīds Barševskis, Zeltīte Barševska, Katerina Lecka. Daugavpils University, Institute of Life Sciences and Technology, Coleopterological Research Centre, Daugavpils, Latvia; e-mail: arvīds.barsevskis@du.lv; ORCID: <https://orcid.org/0000-0001-9703-0115>

Milton Norman Medina. Institute of Agriculture and Life Sciences, Davao Oriental State University, Dahican, Mati City 8200 Philippines; ORCID: <https://orcid.org/0000-0001-6858-8048>

Analyn Anzano Cabras, Janreve Odango, Treaseur Susulan. University of Mindanao, Matina Campus, Davao, Philippines; ORCID: <https://orcid.org/0000-0002-0980-1651>

Afnan Sa'ud Hanifuddin. Ahmad Dahlan University, Jl. Kapas No.9, Semaki, Kec. Umbulharjo, Kota Yogyakarta, Daerah Istimewa Yogyakarta 55166, Indonesia

Gabriella Tarida Kurnitami. Diponegoro University, Jl. Prof. Sudarto No.13, Tembalang, Kec. Tembalang, Kota Semarang, Jawa Tengah 50275, Indonesia

Daffa Muhammad Rifqi. Yogyakarta State University, Jl. Colombo Yogyakarta No.1, Karang Malang, Caturtunggal, Kec. Depok, Kabupaten Sleman, Daerah Istimewa Yogyakarta 55281, Indonesia

INTRODUCTION

The genus *Anoplophora* Hope, 1839 (Coleoptera: Cerambycidae), is widely distributed in Asia. Many species are very colorful which made them appealing to the collectors (Yang et al. 2020). Some species are however, considered as pests (Nowak et al. 2001; Smith et al. 2001; Macleod et al. 2002; Williams et al. 2004; Bankroft, Smith 2005; Hu et al. 2009; Smith et al. 2009; Haack et al. 2013; Brabbs et al. 2015; Crook et al. 2014; Dhandapani et al. 2020; Hérard, Maspero 2019; Keena et al. 2021; Li et al. 2004; Nehme et al. 2013; Nehme et al. 2014; McKenna et al. 2016; Sjöman et al. 2014; Colombo, Limonta 2001; Tomiczek et al. 2002; Bencker et al. 2004; Hérard et al. 2005; Hérard et al. 2006; Maspero et al. 2007; Tomiczek et al. 2007; Benker et al. 2004; Benker, Bogel C. 2008; Sabbatini et al. 2012; Bazzoli, Alghisi 2013; Bianchi et al. 2013, Ciampitti et al. 2013a, 2013b; Copini et al. 2013; Favaro et al. 2013; Loomans et al. 2013; Maspero et al. 2013; Pluess 2013; Roselli et al. 2013; Sabbatini Peverieri et al. 2013; Vukadin A. 2013; Zampini et al. 2013; Pajovic et al. 2017), while some plays an integral part in the tropical rainforests. With this, many scientists around the world are working on developing new methods on how to detect these species and mitigate them effectively (Kethidi et al. 2003; Hajek et al. 2007a, 2007b; Mankin et al. 2008; Yasui et al. 2011; Hoyer-Tomiczek & Sauseng 2013; Strangi et al. 2013; Villa et al. 2013). Although, this genus is widely distributed in the Oriental and partly in the Southeast of the Palearctic region presently, there is very little knowledge of the distribution of this group making it difficult to make decisions on the protection of some endangered species. The genus *Anoplophora* has been revised by S.W. Lingafelter and R.E. Hoebeke (2002), in which the authors indicate 20 new synonyms and several new combinations. This article is based on the systematics applied in the Titan database (Tavakilian, Chevillotte 2022).

The purpose of this article is to provide information on the species distribution of this genus using the data on *Anoplophora* species stored at the

Daugavpils University Beetle Collection (DUBC, Latvia, Ilgas). Daugavpils University Beetle Collection has a wide collection of *Anoplophora* accounting to 27 out of fifty or 54% of species known in the world fauna, distributed from the Philippines, Vietnam, Thailand, Laos, Malaysia, Indonesia, China, Taiwan, and Japan.

Three species from the Philippines are indicated for the first time: *A. asuanga* (Schultze, 1923) is reported for the first time in Leyte and Samar islands, *A. sebastieni* (Duranton, 2004) in Luzon Island, and *A. tianaca* (Schultze, 1923) in Negros Island. *Anoplophora zonator* (Thomson, 1878) is recorded for the first time in Vietnam. New information on the distribution of *A. sebastieni* is also presented for the first time.

MATERIALS AND METHODS

The materials examined are deposited in the Daugavpils University Beetle Collection (DUBC) in Latvia, Ilgas, previously mounted, measured, labeled, and researched by the first author. Cross referencing of the data was done using several online databases in Cerambycidae (Tavakilian & Chevillotte, 2022; Bezark, 2022; Roguet 2004–2022). The checklist contains alphabetically arranged species names, literature, distribution data including new records, with notes for some species. Information on the materials examined are copied verbatim from the card labels for each species in the collection.

Specimens were examined using Nikon AZ100 Multizoom, Nikon SMZ745T and Zeiss SteREO Lumar.V12 digital stereomicroscopes, NIS-Elements Advanced Research software, and Canon EOS 60D and Canon EOS-1Ds Mark II digital cameras.

SPECIES LIST OF ANOPLOPHORA HOPE, 1839

1. *Anoplophora albopicta* (Matsushita, 1933)
(Fig. 1)

References: Kano, 1933; Kato, 1933; Matsushita, 1933; Breuning, 1944; Breuning, 1961; Gressitt, 1951; Hua, 2002; Lingafelter & Hoebeke, 2002; Bi & Ohbayashi, 2015; Grosser & Ambrus, 2021.

Distribution: Taiwan.

Material examined: Taiwan: Chiayi, Zhongpu, 05.2016 (3, local collector). Total: 3 ex.



Fig. 1. *Anoplophora albopicta* (Matsushita, 1933).

2. *Anoplophora asuanga* (Schultze, 1923)
(Fig. 2)

References: Schultze, 1923; Breuning, 1944; Breuning, 1961; Breuning, 1980; Hüdepohl, 1983a; Hüdepohl, 1983b; Lingafelter & Hoebeke, 2002; Bi & Ohbaishi, 2015.

Distribution: Philippines.



Fig. 2. *Anoplophora asuanga* (Schultze, 1923).

Materials examined: Philippines: Mindanao island, Surigao, 05.2012 (2, local collector); Cabañlasan, Bukidnon, 05.2014 (1, local collector); Mt. Apo, 09.2015 (1, local collector); **Leyte island**, Mahaplag, 08.2014 (1, local collector) [exProf. A. Barševskis coll.], 10.2018 (3, local collector), 04.2019 (6, local collector), 04.2019 (1, local collector), 10.2020 (4, local collector leg.), 04.2021 (1, local collector leg.), 10.2021

(1, local collector leg.), 11.2021 (1, local collector leg); **Samar island**, Hinabangan, 01.2015 (2, local collector), 02.2019 (1, local collector), 08.2014 (1, local collector) [ex Prof. A. Barševskis coll.], 10.2019 (1, local collector); Sogod, 02.2015 (2, local collector), 05.2016 (1, local collector) [ex Prof. A. Barševskis coll.]; Lope de Vega, 09.2013 (1, local collector), October 2013 (1, local collector), 03.2019 (1, local collector); Hinunungan, 05.2005 (1, local collector) [ex Prof. A. Barševskis coll.]; Dinagat island, 02.2019 (1, local collector). Total: 35 ex.

Note: In this paper, the species is reported for the first time for Leyte and Samar islands.

3. *Anoplophora beryllina* (Hope, 1840)

References: Hope, 1840a, 1840b; Hope, 1841; White, 1858; Gemminger & von Harold, 1873; Gahan, 1888; Pic, 1931; Kano, 1930; Breuning, 1961; Breuning, 1965; Rondon & Breuning, 1970; Pu, 1992; Hua, 2002; Lingafelter & Hoebeke, 2002; Ohbayashi, Ogawa & Su, 2009; Bi & Ohbayashi, 2015.

Distribution: China, India, Myanmar, Laos, Vietnam.

Material examined: Laos: Muang Khoa district, Mt. Phu Nam Yong, 06.2013 (2, local collector) [ex Prof. A. Barševskis coll.]; Hua Phan Province, Mt. Phu Pane, 1200-1600 m, 05.2011 (1, St. Jakl and Laos collectors), 3105.-11 06. 2011 (2, St. Jakl and local collector) 06. 2011 (1, St. Jakl and Laos collectors), 05.2011 (1, St. Jakl and Laos collectors), 04.2015 (3, local collector), 06.2018 (1, local collector) [ex Prof. A. Barševskis coll.]; China: Guangxi, Jinxiu, Mt. Dayaoshan, 1100 m, 05.2017 (2, local collector); Sichuan, Mt. Er Lang Shan, Yaan City, 06.2004 (1, local collector); Vietnam: Ngoc Linh, Kon Tum, 04.2021 (1, local collector); Yen Bai 05.2021 (2, local collector). Total: 17 ex.

4. *Anoplophora birmanica* (Tippmann, 1953)

References: Tippmann, 1953; Breuning, 1961; Hüdepohl, 1990; Lingafelter & Hoebeke, 2002; Ponpinij, Hormchan & Rojanavongse, 2011; Lingafelter, Nearn, Tavakilian, Monné & Biondi, 2014.

Distribution: India, Myanmar, Thailand.

Material examined: Thailand: Tak, Umphang, 06.2016 (2, local collector). Total: 2 ex.

5. *Anoplophora cheni* Bi & N. Ohbayashi, 2015

References: Bi, Ohbayashi, 2015; Lin, Tavakilian, 2019; Bin, Chen, Ohbayashi, 2020.

Distribution: China, Vietnam.

Material examined: Vietnam: Lao Cai province, Mt. Saga; 04.2019 (1, local collector), 2015 (1, local collector) [ex Prof. A. Barševskis coll.]; Yen Bai 05.2020 (5, local collector), 06.2020 (4, local collector), 07.2020 (1, local collector), 04.2021 (3, local collector), 05.2021 (2, local collector), 06.2021 (7, local collector). Total: 24 ex.

6. *Anoplophora chinensis* (Forster, 1771)

(Fig. 3)

References: Bates, 1888; Bates, 1890; Berger, 2012; Bates, 1888; Bazzoli, Alghisi, 2013; Ciampitti et al., 2013a, 2013b; Cocquempot, 2003; Bates, 1890; Breuning, 1961; Cavagna et al., 2013; Cocquempot & Prost, 2003; Dong & Yin, 2002; Ohbayashi & Ogawa, 2009; Fabricius, 1776; Gahan, 1900; Goeze, 1777; Houttuyn, 1766; Hua, 2002; Cao & Achterberg, 2020; Eyre, 2017; Forster, 1771; Hanks & Wang, 2017; Haack, 2017; Houttuyn, 1766; Klausnitzer & Klausnitzer, 2016; Lin & Perissinotto, 2021; Lingafelter & Hoebeke, 2002; Bianchi et al., 2013; Li & Jiroux, 2013; Roselli et al., 2013; Sabbatini Peverieri et al., 2013; Strangi et al., 2013; Loomans et al., 2013; Pacini, 2011; Ohbayashi & Ogawa, 2009; Özdikmen, 2017; Thomson, 1868; Voet, 1781; Vitali, 2010.

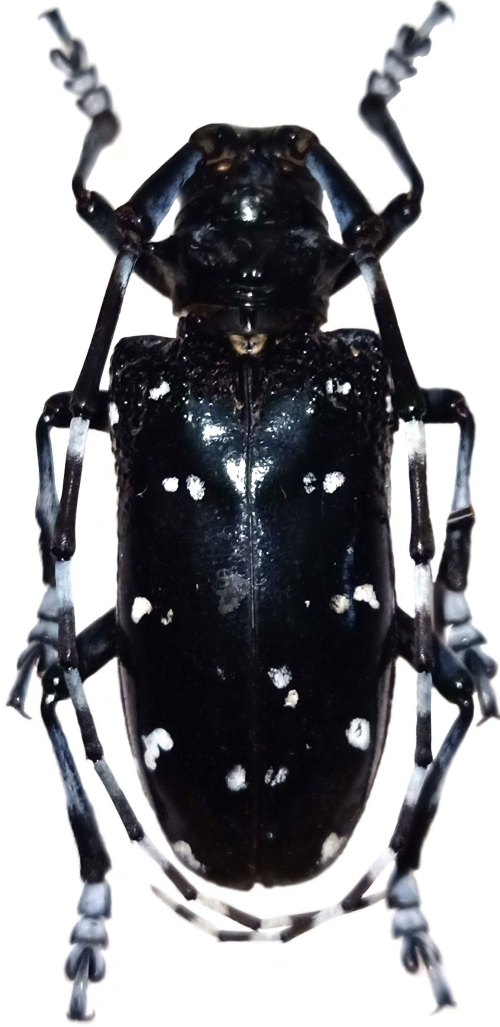


Fig. 3. *Anoplophora chinensis* (Forster, 1771).

Distribution: China, Philippines (Luzon), Indonesia, Japan, Korea, Malaysia, Myanmar, Taiwan, Thailand, Vietnam. Introduced in North America, Italy, France, Turkey, Australia.

Materials examined: Vietnam: Lao Cai prov, Mt. Sapa 05.2015 (3, local collector), 07.2015 (2, local collector), 08.2015 (2, local collector), 03.2013 (4, local collector), 05.2013 (2, local collector), 07.2013 (2, local collector), 06.2015 (3, local collector); Mucangchai, Yenbai prov., 06.2016 (1, local collector), 07.2016 (1, local collector leg.); Ha Giang 06.2013 (4, local

collector), 05.2014 (1, local collector leg.); Tam Dao 06.2001 (1, local collector) 06.2001 (1, local collector leg.); China: Anhui, Bengbu City, Huaiyuan Co., Jingshan, 06.2021, (1, local collector leg.); Hunan, Zhangjiajie, 08.2021 (2, local collector leg.); Yunnan, Jingjiang, Mangyun, 05.2021 (2, local collector leg.); Yunnan, Xiping Mt, Ailaoshan 06.2004 (1, local collection), 06.2015 (4, local collector), 10.06.2014 (1, local collector le.); Yunnan, Xiping Mt, Ailaoshan 1900 m (2, local collector), 10.06.2014 (1, local collector); Wenshan, Panlong Park, 05.2018 (2, local collector); Sichuan, Liziping, Shimian Yaan, 07.2017 (1, local collector); Yingjing Yaan, Mt. Daxiangling, 1400 m, 01.07.2015 (1, local collector leg.); Luding 1500 m 07.2015 (2, local collector); Heilongjiang Gongging 06.2006 (1, local collector); Ruyuan, Guangdong, Mt. Nanling 10.06.2013 (1, local collector); Henan, Linzhou City, Taihangshan, 06.2020 (1, local collector leg.); Sinan, Guizhou prov 07.2013 (1, local collector); Xinjiang, Yili, 07.2019 (2, local collector); Thailand: Quang Ngai 03.2013 (1, local collector); Japan: Asukecho, Toyota-shi, Aichi-ken 06.1972 (1, local collector); Ichibu Town Omuta city, Fukuoka 06.2015 (1, S.Fujiyama leg.); Shimobe, Minobu 01.06.2016 (1, S.Ueno leg.); Taiwan: Nantou, Puli, 05.2005 (1, local collector); Total: 58 ex.

7. *Anoplophora davidis* (Fairmaire, 1886)

References: Fairmaire, 1886; Aurivillius, 1922; Pic, 1925; Pic, 1936; Bruening & Itzinger, 1943; Chiang, 1951; Breuning, 1961a; Breuning, 1961b; Breuning, 1961c; Hayashi, 1971; Pu, 1992; Lingafelter & Hoebcke, 2002; Hua, 2002; Ohbayashi, Ogawa, & Su, 2009; Bi & Ohbayashi, 2015.

Distribution: China, Cambodia, Laos, Myanmar, Taiwan, Thailand, Vietnam.

Material examined: China: Yunnan, Banna, Mt. Jiluoshan, 05.2020 (1, local collector); Yunnan, Weixi, Ahualuo, 06.2021 (1, local collector); Yunnan, Weixi, 06.2020 (1, local collector); Yunnan, Jinghong, Mt. Jiluoshan, 06.2021 (1, local collector); Yunnan, Jingjiang, Xima, 05.2020 (1, local

collector); Yunnan, Dali, Fengyi, 2000 m, 06.-07.2020 (1, local collector); Laos: Mt. Phu Phan, 04.2016 (6, local collector), 04.-05.2012 (7, local collector), Mt. Phu Phan, 08.2016 (3, local collector); Thailand: Chiangmai, Chingdao hill, 26.10.2018 (1, Ustinov V. leg.); Vietnam: Nghe An, 12.2021 (1, local collector), Phu Phan Mt, 06.2018 (4, local collector); Taiwan: Chiayi, Zhongpu, 05.2016 (4, local collector). Total: 31 ex.

8. *Anoplophora elegans* (Gahan, 1888)

References: Gahan, 1888; Gahan, 1900; Aurivillius, 1922; Pic, 1925; Pic, 1927; Breuning, 1944; Tippmann, 1953; Breuning, 1961; Breuning, 1961a; Breuning, 1961b; Breuning, 1961c; Breuning, 1961d; Hua, 2002; Ohbayashi, Ogawa & Su, 2009; Löbl & Smetana, 2010; Wallin, Kvamme, & Nýlander, 2014; Bi & Ohbayashi, 2015; Lin & Tavalilian, 2019; Wang & He, 2021.

Distribution: China, Laos, Myanmar, Thailand, Vietnam.

Material examined: Laos: Mt. Phu Phan, 04.-05.2012 (4, local collector), 06.2011 (2, local collector). Vietnam: Ha Giang, Lung Chu, 1600m (1, local collector), 08.2016 (1, local collector leg.); Ha Giang, 06.2020 (4, local collector), Nghe An, 05.2021 (1, local collector); Yen Bai, Mu Cang Chai, 1700 m, 05.2016 (2, local collector); Yen Bai, 05.2015 (2, local collector), 06.2020 (2, local collector), 07.2020 (1, local collector), 08.2020 (2, local collector), 09.2020 (3, local collector), 12.2020 (1, local collector), 03.2021 (2, local collector). Total: 28 ex.

9. *Anoplophora fruhstorferi* (Aurivillius, 1902)

References: Aurivillius, 1902, 1922; Chiang, 1951; Breuning, 1961; Hua, 2002; Lingefalter, Hoebeke, 2002.

Distribution: China, Vietnam.

Material examined: Vietnam, Nghe An, 05.2021 (1, local collector). Total: 1 ex.

10. *Anoplophora graafi* (Ritsema, 1880)

(Fig. 4)

References: Ritsema, 1880; Aurivillius, 1922; Breuning, 1961.

Distribution: Indonesia (Borneo, Sumatra), Malaysia.

Material examined: Indonesia: Borneo, 05.2009 (1, local collector). Total: 1 ex.



Fig. 4. *Anoplophora graafi* (Ritsema, 1880).

11. *Anoplophora glabripennis* (Motschulsky, 1854)

References: Motschulsky, 1854, 1860, 1866; Thomson, 1857, 1860, 1868, 1878; Gemminger & Harold, 1873; Ganglbauer, 1889; Jakobson, 1911; Aurivillius, 1922; Pic, 1925, 1926, 1953; Matsuhita, 1933; Kano, 1933; Breuning, 1944, 1946, 1961; Yan, 1985; Cavey et al., 1998; Wu, Jiang, 1998; Wang et al., 1999; Wright, 2000; Nowak et al., 2001; Smith et al., 2001; Lingafelter & Hoebke, 2002; Macleod et al., 2002; Hua, 2002; Britton & Sun, 2002; Kethidi et al., 2003; Menier, 2003; Cocquempot, Prost & Carmignac, 2003; Hérard et al., 2005, 2006; Bankroft, Smith, 2005; Monne & Hovore, 2006; Haack, 2006; Maspero et al., 2007; Hajek et al., 2007a, 2007b; Xu & Neng, 2007; Tomiczek et al., 2002, 2007; Benker, Bogel, 2008; Mankin et al., 2008; Mouthiez & Peru, 2008; Hugel & Brua, 2009; Allemand et al., 2009; Ohbayashi, Ogawa & Su, 2009; Smith et al. 2009; Berger, 2012; Li et al., 2013; Pluess, 2013; Lethmayer, 2013; Copiniet al., 2013; Loomanset et al., 2013; Zampiniet al., 2013; Slipinski & Escalona, 2013; Sjöman et al., 2014; Bouchard, 2014; Šwacha & Lawrence, 2014; Crook et al., 2014; Berger & Peslier, 2014; Lim et al., 2014; Ayberk, Ozdikmen & Cebeci, 2014; Bi & Ohbayashi, 2015; Brabbs et al., 2015; Turgeon et al., 2015; Klausnitzer et al., 2016; McKenna et al., 2016; Faccoli & Favaro, 2016; Sabol et al., 2016; Bousquet et al., 2017; Haack, 2017; Hanks & Wang, 2017; Ozdikmen, 2017, 2021; Pajović et al., 2017; Cao et al., 2019; Lazarev, 2019a, 2019b; Li et al., 2020; Cao et al., 2020; Dhanda-pani et al. 2020.

Distribution: Australia, Austria, China, Canada, France, Germany, Korea, Italy, Japan, Montenegro, Netherlands, Switzerland, Slovakia, Turkey, United Kingdom, United States.

Material examined: China: Anhui, Bengbu City, Huaiyuan Co., Jingshan, 06.2021, (1, local collector), 07.2021, (4, local collector); Hunan, Huaiahua, Jingzhou, Mt. Yufengshan, 600m, 07.2017 (1, local collector); Yunnan, Whenshan, Panlong Park, 05. 2018 (2, local collector). Total: 8 ex.

12. *Anoplophora horsfieldii* (Hope, 1842) (Fig. 5)



Fig. 5. *Anoplophora horsfieldii* (Hope, 1842).

References: Hope, 1842; Hope, 1843; Hope, 1845; Thomson, 1856; Thomson, 1868; Gemminger & Harold, 1873; Fairmaire, 1889; Bates, 1890; Aurivillius, 1922; Breuning, 1944; Gressitt, 1951; Breuning, 1961; Pu, 1992; Hua, Nara, & Yu, 1993; Hua, 2002; Lingafelter & Hoebke, 2002; Bi & Ohbayashi, 2015; Ohbayashi, 2018.

Distribution: China, India, Laos, Taiwan, Thailand, Vietnam.

Material examined: China: Shanghai, Pudong, 07.2017 (1, local collector), Yunnan, Xichuangbanna, Mengla, 06.-08. 2014 (1, local collector); Yunnan, Jingjiang, Mangyun, 05.2021 (2, local

collector); Wenxian, Gansu, 06.-07.2020 (1, local collector); Thailand: Chiang Rai, Chiang San, 06.2012 (1, local collector); Vietnam: Ha Giang, Lung Cu, 04.2019 (1, local collector leg.), 08.2019 (1, local collector). Total: 6 ex.

13. *Anoplophora imitator* (White, 1858)

References: White, 1858; Gemminger & von Harold, 1873; Gahan, 1888; Fairmaire, 1889; Aurivillius, 1922; Gressitt, 1937; Breuning, 1961; Hua, 2002; Bi & Ohbayashi, 2015; Lin & Tavakilian, 2019; Danilevsky, 2020; Wang & Li, 2021.

Distribution: China.

Material examined: China: Fujian, Fuzhou, Lianjiang 06.2020 (2, local collector); Fujian, Ningde, 20.07.2019., (1, local collector); Fujian, Sauming, 1200 m, 05.2020, (1, local collector); 06.2020 (1, local collector), 08.2020 (1, local collector); Guangxi, Fangchengang, Naliang, 06.2020 (1, local collector); Guangxi, Jinxiu, Pingban, Mountain Dayaoshan, 1200 m, 2013 (3, Xihuangshun leg.), 06 2017 (1, local collector) [ex Prof. A. Barševskis coll.], 1100 m, 07.2017 (1, local collector leg.). Total: 12 ex.

14. *Anoplophora lucipor* (Newman, 1842) (Fig. 6)

References: Newman, 1842; Westwood, 1848; Lacordaire, 1869; Gemminger & von Harold, 1873; Aurivillius, 1922; Schultze, 1923; Breuning, 1944; Breuning, 1961; Hüdepohl, 1983; Hüdepohl, 1989; Lingafelter & Hoebeke, 2002.

Distribution: Philippines (Luzon).

Materials examined: Philippines: Luzon isl., Nueva Vizcaya, Belance, 05.2015 (1, local collector), 08.2013 (1, local collector), 06.2014 (1, local collector), 09.2015 (1, local collector), 07.2018 (1, local collector); Sierra Madre, Quirino, 08.2014 (1, local collector), 09.2018 (1, local collector), 06.2014 (1, local collector) [ex Prof. A. Barševskis coll.]; Cagayan valey, Sta. Ana,

09.2014 (1, local collector); [ex Prof. A. Barševskis coll.], 06.2021 (1, local collector leg.). Total: 10 ex.



Fig. 6. *Anoplophora lucipor* (Newman, 1842).

15. *Anoplophora macularia* (Thomson, 1865)

References: Thomson, 1865; Bates, 1873; Kolbe, 1886; Gressitt, 1951; Ohbayashi, 2001; Hua, 2002; Lingafelter & Hoebeke, 2002; Ohbayashi &

Niisato, 2007; Xu & Neng, 2010; Ohbayashi, Ogawa & Su, 2009; Bi & Ohbayashi, 2015; Haack, Keena & Eyre, 2017; Danilevsky, 2020; Grosser & Ambrus, 2021.

Distribution: China, Korea, Japan, Malaysia, Taiwan.

Material examined: Japan: Tonosiro-Takeda, Ishigaki City, Okinawa prefecture, 20.04.2015 (1, T. Nakata leg.) [ex Prof. A. Barševskis coll.]; Mountain Nosokodake (Ishigaki-jima island) Ishigaki City, Okinawa Prefecture, 02.06.2014 (1, T. Nakata leg.) [ex Prof. A. Barševskis coll.]; Tonosiro-Takeda, Ishigaki City, Okinawa prefecture, 20.04.2015 (1, T. Nakata leg.) [ex Prof. A. Barševskis coll.]; Akatsuka, Itabashi Ward, Tokyo, 03.08.2013 (1, S. Ueno leg.) [ex Prof. A. Barševskis coll.]; Fujita, Omuta City, 22.06.2015 (1, S. Nishimoto leg.) [ex Prof. A. Barševskis coll.]; China: Mountain Yufengshan, 600 m, Jingzhou, Huaihua Hunan. 07.2017 (1, local collector leg.) [ex Prof. A. Barševskis coll.]. Total: 6 ex.

16. *Anoplophora malasiaca* (Thomson, 1865)

References: Thomson, 1865; Aurivillius, 1922; Breuning, 1949; Breuning, 1961a; Breuning, 1961b; Komazaki et al., 1989; Adachi, 1990; Niisato, 1994; Ohbayashi, 2001; Colombo, Limonta 2001; Ohbayashi & Niisato, 2007; Ohbayashi, Ogawa, & Su, 2009; Löbl & Smetana, 2010; Yasui et al. 2011; Švácha & Lawrence, 2014; Özdikmen, 2017a; Özdikmen, 2017b; Lin & Tavakilian, 2019; Özdikmen, 2021.

Distribution: China, Japan, Korea, Malaysia, Taiwan. Introduced in Austria, Croatia, Czech Republic, Germany, Italy, Netherlands, Turkey.

Material Examined: Japan: Fukuoka, Omuta City, Hagio town, 06.2016 (1, Y. Tokuyama leg.); Yamanashi prefecture, Minamikoma country, Minobu, Shimobe, 01.07.2016 (1, S.Ueno leg.), 03.08.2016 (1, Y. Tokuyama leg.); Taiwan: Nantou, Puli, 05.2005 (1, local collector leg.). Total: 4 ex.

17. *Anoplophora mamaua* (Schultze, 1923) (Fig. 7)



Fig. 7. *Anoplophora mamaua* (Schultze, 1923).

References: Schultze, 1923; Breuning, 1944; Breuning, 1961; Hüdepohl, 1989; Lingafelter & Hoebeke, 2002; Wallin, Kvamme & Nyländer, 2014.

Distribution: Philippines (Mindoro).

Materials examined: Philippines: Mindoro Island, Mt. Halcon, 01.2016 (2, local collector), 03.2015 (2, local collector), 09.2013 (1, local collector), 04.2014 (1, local collector); Mindoro Island, 06.2012 (1, local collector) [ex Prof. A. Barševskis coll.]; Baco 06.2020 (2, local collector), 08.2020 (1, local collector), 12.2020 (3,

local collector), 03.2021 (2, local collector), 05.2021 (1, local collector). Total: 16 ex.

18. *Anoplophora medenbachi* (Ritsema, 1881)
(Fig. 8)



Fig. 8. *Anoplophora medenbachi* (Ritsema, 1881).

References: Ritsema, 1881; Nonfried, 1892; Gahan, 1894; Heller, 1919; Aurivillius, 1922a; Aurivillius, 1922b; Fisher, 1934; Breuning, 1944; Breuning, 1961; Lingafelter & Hoebke, 2002; Ponpinij, Hormchan & Rojanavongse, 2011; Lingafelter et al., 2014.

Distribution: Indonesia (Java, Sumatra), Malaysia, Myanmar, Thailand.

Material examined: Malaysia: Perak, Tapah Hills, 03. 2010 (1, local collector), 02.2012 (2, local collector), Cameron Highlands, 04.2005 (1, local collector), Kelantan, 07.2015 (1, local collector); Indonesia: Sumatra, Harau Valley, 04.2009 (1, local collector), Sumatra, 03.2010 (3, local collector), 08.2020 (2, local collector). Total: 11 ex.

19. *Anoplophora oshimana tokunoshimana* Samuelson, 1965

References: Samuelson, 1965; Ohbayashi & Niisato, 2007; Ohbayashi, Agawa & Su, 2009.

Distribution: Japan.

Material examined: Japan: Kagoshima prefecture, Kanami, Tokunoshima, 05.2015 (2, S. Fukida leg.). Total: 2 ex.

20. *Anoplophora ryukyuensis* (Breuning & Obayashi, 1964)

References: Breuning & Ohbayashi, 1964; Kojima & Hayashi, 1969; Hayashi, 1969; Kusama, 1973; Ohbayashi & Niisato, 2007; Ohbayashi, Ogawa & Su, 2009.

Distribution: Japan.

Material examined: Japan: Mt. Inbidake, Yonaguni-jima Island, Yaeyama County, Okinawa prefecture, 12.07. 2012 (2, T. Nakata leg) [ex Prof. A. Barsevskis coll.]; Tonoshiro-Takeda, Ishi-gaki-jima Island, Ishigaki City, Okinawa prefecture, 20.04.2015 (1, T. Nakata leg.). Total: 3 ex.

21. *Anoplophora sebastieni* (Duranton, 2004)
(Fig. 9)



Fig. 9. *Anoplophora sebastieni* (Duranton, 2004).

References: Duranton, 2004.

Distribution: Philippines (Luzon).

Material examined: Philippines: Luzon isl., Zambales, 10.2018 (1, local collector), 12.2018 (1, local collector), 12.2016 (1, local collector). Total: 3 ex.

Note: The species is described from the small island Camiguin in northern Luzon. This article contains the first published information on finding

the species after its description. The species is reported for the first time for the Luzon island.

22. *Anoplophora sollii* (Hope, 1839)
(Fig. 10)



Fig. 10. *Anoplophora sollii* (Hope, 1839).

References: Hope, 1839; Aurivillius, C 1922; Breuning & Itzinger, 1943; Breuning, 1961; Gahan, 1894; Gemminger & Von, 1873; Gressitt, 1951; Hope, 1839; Hope, 1840; Hua, 2002; Lacordaire, 1869; Lingafelter & Hoebeke, 2002; Mitra & Chakraborti, 2017; Ohbayashi, 2009; Rondon & Breuning, 1970; Thomson, 1864.

Distribution: China, India, Laos, Myanmar, Thailand, Vietnam.

Material examined: Vietnam: Mu Cangchai prov., Yen Bai 05.2016 (2, local collector leg.), 07.2016 (4, local collector leg.); Yen Bai, 06.2021 (5, local collector leg.); Tam Dao, Vinh Phuc, 1300 m, 05.2019 (1, local collector leg.); Laos: Cai prov, Mt. Sapa, 06.2015 (1, local collector); Mt. Phu Phan 06.2016 (1, local collector). Total: 14 ex.

23. *Anoplophora stanleyana* Hope, 1839

References: Hope, 1839, 1840; Duponchel, 1841; Lacordaire, 1869; Gemminger & Harold, 1873; Aurivillius, 1922; Pic, 1934; Breuning, 1944, 1950, 1961; Lingafelter & Hoebke, 2002; Hua, 2002; Ohbayashi, Ogawa & Su, 2009; Ponpinij, Hormchan & Rojanavongse, 2011; Lingafelter et al., 2014; Bi & Ohbayashi, 2015; Lazarev, 2019.

Distribution: Buthan, China, India, Myanmar, Thailand, Vietnam.

Material examined: India: Khashi hill., 09.2004 (2, local collector). Total: 2 ex.

24. *Anoplophora tonkinea* (Pic, 1907)

(Fig. 11)

References: Pic, 1907; Aurivillius, 1922; Breuning, 1961; Gressitt, 1951; Hua, Li, Zhong, 2002; Lin & Tavakilian, 2019; Löbl & Smetana, 2010.

Distribution: China, Vietnam.

Material examined: Vietnam: Ha Giang, Lung Cu, 04.2019 (2, local collector); Lao Cai prov., Mt Sapai, 05.2015 (2, local collector); Mucangchai, Yen Bai, 04.2016 (2, local collector); Yen Bai 06.2020 (4, local collector), 05.2020 (1, local collector); Cao Bang 2020 (1, local collector). Total: 12 ex.



Fig. 11. *Anoplophora tonkinea* (Pic, 1907).

25. *Anoplophora tianaca* (Schultze, 1923) (Fig. 12)

References: Schultze, 1923; Breuning, 1944; Breuning, 1961; Hüdepohl, 1989; Lingafelter & Hoebeke, 2002.

Distribution: Philippines (Panay, Negros).



Fig. 12. *Anoplophora tianaca* (Schultze, 1923).

Material examined: Philippines: **Negros Island**, Don Salvador Benedicto, 01.2018; (1, local collector) [ex Prof. A. Barševskis coll.]. Total: 1 ex.

Note: The species is reported for the first time in Negros Island.

26. *Anoplophora wusheana* (Chang, 1960)
(Fig. 13)

References: Chang, 1960; Yu, 2002; Chou, 2008; Ohbayashi & Niisato, 2009; Hua, 2002; Lingafelter & Hoebeke, 2002.

Distribution: Taiwan.

Material examined: Taiwan: Heiping district, Taichung, Anma Shan, 06.2010 (1, local collector). Total: 1 ex.



Fig. 13. *Anoplophora wusheana* (Chang, 1960).

27. *Anoplophora zonator* (Thomson, 1878)

References: Thomson, 1865; Pic, 1925; Breuning, 1944; Breuning, 1961; Breuning, 1968; Rondon, 1962; Lingafelter & Hoebeke, 2002; Hua, 2002; Bi & Ohbayashi, 2015; Lin & Tavakilian, 2019; Danilevsky, 2020.

Distribution: China, Laos, Myanmar, Thailand.

Material Examined: Thailand: Chiang Rai, Wiang Papao, 06.2016 (1, Th. Richter leg.); Mang Papao, 05.2014 (1, local collector); Laos: Mt. Phu Phan, 04.2016 (1, local collector); Vietnam: Gia Lai, 05.2021 (2, local collector). Total: 5 ex.

Note: The species is reported for the first time in Vietnam.

REFERENCES

Adachi I., 1990. Population studies of *Anoplophora malasiaca* adults (Coleoptera: Cerambycidae) in a citrus grove. *Res. Popul. Ecol.*, 32: 15–32.

Allemand R., Dalmon J., Pupier R., Rozier Y., Marengo V., 2009. Coléoptères de Rhône-Alpes. Cérambycides. *Musée des Confluences (Société linnéenne de Lyon)*: 1–351.

Aurivillius C. 1922. Cerambycidae: Lamiinae. *I Coleopterorum Catalogus pars 73 [vol. 23] I*: 1–322, W. Junk & S. Schenkling, Berlin.

Ayberk H., Özdikmen H., Cebeci H., 2014. A Serious Pest Alert for Turkey: A Newly Introduced Invasive Longhorned Beetle, *Anoplophora glabripennis* (Cerambycidae: Lamiinae). *Florida Entomologist*, 97(4): 1852–1855, 3 figs.

Bankroft J.S., Smith M.T. 2005. Dispersal and influences on movement for *Anoplophora glabripennis* calculated from individual mark-recapture. *Entomol. Exp. Appl.*, 116: 83–92.

Bates H. W. 1873. On the Longicorn Coleoptera of Japan. *The Annals and Magazine of Natural History, London* (4), 12(70): 308–318.

Bates H. W. 1888. On a collection of Coleoptera from Korea (Tribe Geodephaga, Lamellicornia, and Longicornia), made by Mr. J.H. Leech, F.Z.S. *Proceedings of the Scientific Meetings of the Zoological Society of London 1888* (25–26): 378–380.

Bates H. W. 1890. Coleoptera collected by Mr. Pratt on the Upper Yang-Tsze, and on the borders of Tibet. *The Entomologist, London* 23(327): 244–247.

Bazzoli M., Alghisi E. 2013. Fighting *Anoplophora chinensis* in a wooded habitat. The Gus-sago case. *Journal of Entomological and Acarological Research*, 45(1): 31.

Benker U., Bogel C., Blaschke M. 2004. Tree fellings due to black longicorn beetle: theasiatic longicorn beetle has been found in the district of Passau [Bavaria, Germany]. *AFZ/Der Wald, Allgemeine Forst Zeitschrift für Waldwirtschaft und Umweltvorsorge*, 59(20): 1112.

Benker U., Bogel C., 2008. Neues vom Asiatischen Laubholzbockkäfer *Anoplophora glabripennis* (Coleoptera, Cerambycidae) in Bayern. *Mitt. Dtsch. Ges. Allg. Angew. Ent.* 16: 121–124.

Berger P., Peslier S. 2014. Cerambycidae Latreille, 1802. In *Marc Tronquet: Catalogue des Coléoptères de France, Association Roussillonnaise d'Entomologie [Supplément au Tome XXIII – RARE]*: 1–1052.

Berger P., Villiers A. 2012. Coléoptères Cerambycidae de la faune de France continentale et de Corse: actualisation de l'ouvrage d'André Villiers, 1978. *R.A.R.E. (Supplément au Tome 21)*: 1–664, 42 figs.

Bezark L. G. 2022. A Photographic Catalog of the Cerambycidae of the World. Old World Cerambycidae Catalog. <http://bezbycids.com/byciddb/wdefault.asp?w=o> [downloaded: January – June 2022]

Bianchi A., Menguzzo S., Materdomini R., Asti S., Fumagalli A.C., Luchelli M., Rossi S., Ciampitti M. 2013. *Anoplophora chinensis* in Lombardy Region: description of survey methodology and quality management. *Journal of Entomological and Acarological Research 2013; volume 45(s1)*: 32–33.

- Bi W., Ohbayashi N. 2015. A New Synonym of the Genus *Anoplophora* Hope, 1839, and Description of a New Species from Yunnan, China (Coleoptera: Cerambycidae: Lamiinae). *The Japanese Journal of Systematic Entomology*, 21(2): 291–296.
- Bouchard P. 2014. The Book of Beetles. A Life-Size Guide to Six Hundred of Nature's Gems. *The University of Chicago Press, Ivy Press Limited: 1–656, 2400 color plates.*
- Bousquet Y., Laplante S., Hammond H.E.J., Langor D. W., 2017. Cerambycidae (Coleoptera) of Canada and Alaska: identification guide with nomenclatural, taxonomic, distributional, host-plant, and ecological data. *Nakladatelstvi Jan Farkac, Prague: 1–300, 46 pls.*
- Brabbs T., Collins D., Hérard F., Maspero M., & Eyre D. 2015. Prospects for the use of biological control agents against *Anoplophora* in Europe. *Pest management science*, 71(1), 7–14.
- Breuning S. 1944. Studies on Lamiines (Coleop. Cerambycidae). Twelfth tribe: Agniini Thomson. *Novitates Entomologicae, 3rd supplement (107–135): 281–512.*
- Breuning S. 1950. Lamières nouveaux de la collection Lepesme. *Longicornia I: 511–535, 8 figs.* Paul Lechevalier, Paris.
- Breuning S. 1961a. Catalogue des Lamières du Monde. *Verlag des Museums G. Frey, Tutzing bei München, (5): 287–382.*
- Breuning S. 1961b. Neue Cerambyciden aus den Sammlungen des zoologischen Museums der Humboldt-Universität zu Berlin (Coleoptera, Cerambycidae). *Mitteilungen aus dem Zoologischen Museum in Berlin*, 37(2): 297–328.
- Breuning S. 1961c. Nouvelles formes de Lamières (Treizième partie). *Bulletin de l'Institut Royal des Sciences Naturelles de Belgique, Bruxelles*, 37(20): 1–44.
- Breuning, S. 1965. Contribution to the knowledge of the Lamiens of Laos (Coll. Céramb.) Part 13. *Bulletin of the Royal Society of Natural Sciences of Laos* 14: 31–62, 40 figs. [Breuning – 417].
- Breuning S. 1968. Contribution à la connaissance des Lamiens du Laos (Coll. Céramb.) 15ème partie et fin. *Bulletin de la Société Royale des Sciences Naturelles du Laos*, 16: 3–44 + corrigenda, 9 figs.
- Breuning S. & Ohbayashi K. 1964. Nouveaux Lamières du Japon (Coleoptera, Cerambycidae). *Bulletin of the Japan Entomological Academy, Nagoya*, 1(4): 15–18.
- Britton K. O., Sun J.-H., 2002. Unwelcome Guests: Exotic Forest Pests. *Acta Entomologica Sinica*, 45(1): 121–130.
- Cao L. M., Achterberg C. V., Tang Y. L., Wang X. Y., Yang Z. Q. 2020. Revision of parasitoids of *Masicus raddei* (Blessig Solsky) (Coleoptera, Cerambycidae) in China, with one new species and genus. *Zootaxa*, 4881(1), zootaxa-4881.
- Cao L.-M., Wang X.-Y., Gould J.-R., Li F., Zhang Y.-L., Yang Zh.-Q. 2019. Braconplanitibiae sp. nov. (Hymenoptera: Braconidae), a new parasitoid of Asian longhorned beetle (*Anoplophora glabripennis*). *Zootaxa*, 4671(3): 427–433, 15 figs.
- Cavagna B., Ciampitti M., Bianchi A., Rossi S., Luchelli M. 2013. Lombardy Region experience to support the prediction and detection strategies. *Journal of Entomological and Acarological Research 2013; volume 45(s1): 1–6.*
- Cavey J. F., Hoebke E. R., Passoa S. & Lingafelter S. W., 1998. A new exotic threat to north american hardwood forests: an asian longhorned beetle, *Anoplophora glabripennis* (Motschulsky) (Coleoptera: Cerambycidae). I. Larval description and diagnosis. *Proceedings of the Entomological Society of Washington*, 100(2): 373–381, 11 figs.

- Chang S. C. 1960. New and unrecorded species of longicorn beetles from Taiwan (I). *Bull. Soc. Plant Pathol. Ent., Taichung*, 11, pls-1.
- Chen S. H. 1959. Cerambycidae I. *Economic Insect Fauna of China, Beijing Science Press*, 1: 1–119.
- Chiang S. 1951. Longicorn Beetles of Kwangsi and Kweichow Provinces of China. *Peking Natural History Bulletin*, 20(1): 1–100.
- Chou W. I. 2008. The Atlas of Taiwanese Cerambycidae. *Owl Publishing House, Taipei*.
- Ciampitti M., Bianchi A., Cavagna B., Materdomini R., Cappa V., Asti S., Di Garbo V., Reggiani G. 2013a. Prevention plan ensuring the protection of the Planta Regina district: stepped-up surveillance for early detection of *Anoplophora chinensis*. *Journal of Entomological and Acarological Research 2013; volume 45(s1): 15–16*.
- Ciampitti M., Cavagna B., Anderloni S., Musmeci R., Maspero M., Menguzzo S. 2013b. *Anoplophora chinensis* control in a city park. *Journal of Entomological and Acarological Research 2013; volume 45(s1): 25–26*.
- Cocquemot C., Prost M., Carmignac D. 2003. Interceptions et introductions en France de Longicornes asiatiques: cas des *Anoplophora glabripennis* (Motschulsky) et *chinensis* (Forster) (Coleoptera Cerambycidae). *Bulletin Mensuel de la Société Linnéenne de Lyon*, 72(8): 273–278.
- Colombo M., Limonta L. 2001. *Anoplophoramasiaca* Thomson (Coleoptera Cerambycidae Lamiinae Lamiini) in Europe. *Bollettino di Zoologia agraria e di Bachicoltura, Serie II*, 33: 65–68.
- Copini P., Sass-Klaassen U., den Ouden J., Mohren F., Loomans A. 2013. Dendrochronology as a tool for dating *Anoplophora* spp. outbreaks. *Journal of Entomological and Acarological Research*, 45(1): 17.
- Crook D.J., Lance D.R., Mastro V.C. 2014. Identification of a potential third component of the male-produced pheromone of *Anoplophora glabripennis* and its effect on behavior. *Journal of chemical ecology*, 40(11), 1241–1250.
- Danilevsky M.L. 2020. Catalogue of Palaearctic Coleoptera, volume 6/1. Chrysomeloidea I (Vesperiidae, Disteniidae, Cerambycidae) *Updated and Revised Second Edition*. Mikhail L. Danilevsky editor. *Koninklijke Brill, Leiden 2: i-xxviii + 1–712*.
- Dhandapani R.K., Gurusamy D., Duan J.J., Palli S.R. 2020. RNAi for management of Asian long-horned beetle, *Anoplophora glabripennis*: identification of target genes. *Journal of Pest Science*, 93(2), 823–832.
- Dong Y.M., Yin Y. P., Cao Y. Q., He Z.B. 2002. Purification and properties of Xylanase from *Anoplophora chinensis* (Förster). *Acta Entomologica Sinica*, 45(2): 165–169.
- [Duponchel, 1841] d’Orbigny A. Ch. V. M., 1841. Dictionnaire Universel d’Histoire Naturelle résumé et complétant tous les faits présentés par les encyclopédies, les anciens dictionnaires scientifiques, les œuvres complètes de Buffon, et les meilleurs traités spéciaux sur les diverses branches des Sciences Naturelles; donnant la description des êtres et des divers phénomènes de la nature, l’étymologie et la définition des noms scientifiques, les principales applications des corps organiques et inorganiques, à l’agriculture, à la médecine, aux arts industriels, etc.; dirigé par M.Charles d’Orbigny, et enrichi d’un magnifique atlas de 288 planches gravées sur acier. *In d’Orbigny, Dictionnaire Universel d’ Histoire Naturelle, Paris 1: i–vi + 1–232 (discours préliminaire) + 1–694*.
- Duranton G. 2004. Une nouvelle espèce dans le genre *Anoplophora* Hope, 1839 *Anoplophora sebastieni* n.sp. (Cerambycidae, Lamiinae, Lamiini). *Besoiro*, 10: 2–4.
- Eyre D. 2017. Life History and Population Dynamics of Cerambycids. *In Cerambycidae of the World*, pp. 85–118. *CRC Press*.

- Fabricius J.C. 1776. Genera insectorum eorumque characteres naturales secundum numerum, figuram, situm et proportionem omnium partium orisa diecta mantissa specierum nu per detectarum Chilonii, Michae Friedrich Bartsch *Michae Friedrich Bartsch: 1–15.*
- Faccoli M., Favaro R., 2016. Host preference and host colonization of the Asian long-horned beetle, *Anoplophora glabripennis* (Coleoptera Cerambycidae) in Southern Europe. *Bulletin of Entomological Research, London* 106(3): 359–367, 3 figs.
- Fairmaire L.M.H. 1889. Beetles of the interior of China Part 5. *Annals of the Entomological Society of France, Paris*, 9(6): 5–84.
- Favaro R., Battisti A., Faccoli M. 2013. Dating *Anoplophora glabripennis* introduction in North-East Italy by growth-ring analysis. *Journal of Entomological and Acarological Research* 2013; volume 45(s1): 35.
- Fisher W.S. 1934. Cerambycidae from Sumatra, with Descriptions of New Species. *Miscellanea Zoologica Sumatrana*, 88: 1–7.
- Forster J.R. 1771. Novae species Insectorum, Centuria I. veneunt apud T. Davies. *White, London: 1–9.*
- Gahan C.J. 1888. LII. On new Lamiide Coleoptera belonging to the *Monohammus* Group. *The Annals and Magazine of Natural History, London*, 6(2), 11: 389–401.
- Gahan C.J. 1894. Viaggio di Leonardo Fea in Birmania e Regioni vicine. LVI. A list of the Longicorn Coleoptera collected by Signor Fea in Burma and the adjoining regions, with descriptions of the new Genera and species. *Annali del Museo Civico di Storia Naturale, Genova (Serie 2)*, 14: 5–104, 1 pl.
- Gahan C.J. 1900. XLVII. On some Longicorn Coleoptera from the Island of Hainan. *The Annals and Magazine of Natural History, London*, 5(7), 28: 347–354.
- Ganglbauer L., 1889. Insecta, a cl. G. N. Potanin in China et in Mongolia novissimelecta. VII. Buprestidae, Oedemeridae, Cerambycidae. *Horae Societatis Entomologicae Rossicae, St. Petersburg*, 24(1–2): 21–85.
- Gemminger M. & von Harold E, 1873. Catalogus coleopterorum hucusque descriptorum synonymicus et systematicus. *Munich* 10: 2989–3232 & *index.*
- Goeze J.A.E. 1777. Entomologische Beiträge zu des Ritter Linné zwölften Ausgabe des Natur-systems. *Leipzig, Weidmanns Erben und Reich* 1: 5–106.
- Gressitt, J.L. 1937. New longicorn beetles from China, IV (Coleoptera: Cerambycidae). *Lingnan Science Journal*, 16(4): 595–621.
- Gressitt, J. L. 1951. Longicorn beetles of China. *Longicornia, Paris*, 2: 1–667.
- Grosser W. & Ambrus R. 2021. New data on the distribution and biology of the longhorn beetles from Taiwan (Coleoptera: Cerambycidae). *Humanity space – International Almanac*, 10(1): 23–55.
- Haack R.A., 2017. Feeding Biology of Cerambycids. In *Qiao Wang, Cerambycidae of the World: Biology and Pest Management*, (3): 105–132, 9 figs. *CRC Press.*
- Haack R.A., 2006. Exotic bark- and wood-boring Coleoptera in the United States: recent establishments and interceptions. *Canadian Journal of Forest Research*, 36: 269–288, 4 figs.
- Haack R.A., Herard F., Sun J., Turgeon J.J. 2010. Managing invasive population of Asian Longhorned Beetle and Citrus Longhorned Beetle: a worldwide perspective. *Annu. Rev. Entomol.*, 55: 521–546.
- Haack R.A., Keena M.A. & Eyre D. 2017. Life History and Population Dynamics of Cerambycids. In *Qiao Wang, Cerambycidae of the World: Biology and Pest Management*, (2): 71–103.

- Hajek A.E., Dubois T., Lund J., Smith M.T., Bauer L., Li Z. 2007a. Developing fungal bands for control of Asian Longhorned Beetle, *Anoplophora glabripennis*, in the U.S.A. *J. Anhui Agric. Univ.*, 34: 149–156.
- Hajek A.E., Dubois T., Lund J., Shanley R., Bauer L., Smith M.T., Fan P., Bo H., Jiafu H., Li Z. 2007b. Microbial control of Asian Longhorned beetles: What are fungal bands? *USDA, Forest Service, Gen. Tech. Rpt. NRS-P-10*.
- Hanks L.M., & Wang Q. 2017. Reproductive biology of cerambycids. In *Cerambycidae of the World: Biology and Pest Management* (pp. 133–159). *CRC Press*.
- Hayashi M. 1969. Studies on Cerambycidae from Japan and its Adjacent Regions (Col.), XVII. *The Entomological Review of Japan*, 21(2): 61–66.
- Hayashi M. 1971. Studies on Cerambycidae from Japan and its Adjacent Regions (Col.), XVIII. *The Entomological Review of Japan*, 23(1): 1–18.
- Heller K.M. 1919. Allgemeines und Spezielle-süber die Lamiidengattung *Nemophas* I. Thoms. (Col. Longicorn.). *TijdschriftvoorEntomologie, Amsterdam*, 62: 98–103.
- Hérard F., Ciampitti M., Maspero M., Krehan H., Benker U., Bogel C. et al. 2006. *Anoplophora* species in Europe: infestations and management processes. *EPPO Bulletin* 36; 470–474.
- Hérard F., Krehan H., Benker U., Bogel C., Schrage R., Chauvat E. et al. 2005. *Anoplophora* in Europe: infestations and management responses. *Proc. 16th U.S. Department of Agriculture inter-agency research forum on gypsy moth and other invasive species 2005, January 18–21; Annapolis, MD. Gen. Tech. Rep. NE337*: 35–40.
- Hérard F., & Maspero, M. 2019. History of discoveries and management of the citrus longhorned beetle, *Anoplophora chinensis*, in Europe. *Journal of Pest Science*, 92(1), 117–130.
- Hope F. W. 1839. Descriptions of some new insects collected in Assam, by William Griffith, Esq., assistant surgeon in the Madras Medical Service. *Proceedings of the Linnean Society of London*, 1: 42–43.
- Hope F.W. 1840a. Descriptions of some new Insects collected in Assam, by William Griffith, Esq., Assistant Surgeon in the Madras Medical Establishment. *The Annals and Magazine of Natural History, London*, 6(37): 299–301.
- Hope F.W. 1840b. Descriptions of some new Insects collected in Assam, by William Griffith, Esq., Assistant Surgeon on the Madras Medical Establishment. *The Proceedings of the Linnean Society of London*, 1: 77–79.
- Hope F.W. 1841. XLI. Descriptions of some Non-descript Insects from Assam, chiefly collected by William Griffith, Esq., F.L.S., Assistant Surgeon in the Madras Medical Service, and attached to the late Scientific Mission to Assam. *The Transactions of the Linnean Society of London*, 18: 587–600.
- Hope F.W. 1842. Descriptions of the Coleopterus insects sent to England by Dr. Cantor from Chusan and Canton, with observations on the Entomology of China. *Journal of Proceedings of the Entomological Society of London, 1841*: 59–64.
- Hope F.W. 1843. Descriptions of the Coleopterus insects sent to England by Dr. Cantor from Chusan and Canton, with observations on the Entomology of China. *The Annals and Magazine of Natural History, London*, 11(67): 62–66.
- Hope F.W. 1845. On the Entomology of China, with Descriptions of the new Species sent to England by Dr. Cantor from Chusan and Canton. *Transactions of the Entomological Society of London*, 4(1): 4–17, pl. 1.
- Houttuyn M. 1766. *Natuurkundige beschrijving der Insekten, wormen en slakken, schyldieren, hoorens, zeegeewassen ent plantdieren. De Erven van F. Houttuyn, Amsterdam. De Insekten*: 9.

- Hoyer-Tomiczek U.Sauseng G. 2013. Sniffer dogs to find *Anoplophora* spp. infested plants. *Journal of Entomological and Acarological Research* 2013; volume 45(s1): 10–12.
- Hugel S., Brua C., 2009. Note sur la présence du Capricorne asiatique *Anoplophora glabripennis* (Motschulsky, 1853) en Alsace (Coleoptera, Cerambycidae). *Bulletin de la Société Entomologique de Mulhouse*, 65(1): 7, 1 fig.
- Hu J., Angeli S., Schuetz S., Luo Y., Hajek A.E. 2009. Ecology and management of exotic and endemic Asian Longhorned beetle *Anoplophora glabripennis*. *Agr. Forest Entomol.*, 11: 359–375.
- Hua L.-Zh. 2002. List of Chinese Insects. *Zhongshan (Sun Yat-sen) University Press, Guangzhou. List of Chinese Insects*, 2: 1–612.
- Hua L., Nara H. & Yu S.K. 1993. Longicorn Beetles of Hainan & Guangdong. *Muh-Sheng Museum of Entomology, Taiwan: 1–320*.
- Hüdepohl K.E. 1983a. Anmerkungen zu den Typen der von Dr. Stephan von Breuning 1980 neu beschriebenen Lamiinen-Arten von den Philippinen, nebst Beschreibung einer neuen Art der Gattung *Acronia* Westw. *Entomologische Arbeiten aus dem Museum G. Frey, Tutzing bei München* 31/32: 177–188.
- Hüdepohl K.E. 1990. Über südostasiatische Cerambyciden IX (Coleoptera, Cerambycidae). *Entomofauna Zeitschrift für Entomologie, Ansfelden*, 11(26): 441–466.
- Hüdepohl K.E. 1989. Über südostasiatische Cerambycidae V. The Philippine species of genus *Anoplophora* Hope, 1839 (Coleoptera, Cerambycidae, Lamiinae, Lamiini). *Entomofauna, Zeitschrift für Entomologie, Linz*, 10(15): 249–254.
- Jakobson G.G., 1911. Die Käfer Russlands und Westeuropas: ein Handbuch zum Bestimmen der Käfer. St. Petersburg, Käfer von Russland: 1–480.
- Kano T.F. 1930. New and unrecorded Longicorn-beetles from the Japanempire. *Insecta Matsumurana, Sapporo*, 5(1–2): 41–48.
- Kano T.F. 1933. New and unrecorded Longicorn-beetles from Japan and its Adjacent Territories II. *Kontyû, Tokyo*, 7(3): 130–140.
- Kato F. 1933. Three new species from Tengyu (described by J.L. Gressitt from Amami Oshima and Taiwan). *The Entomological World*, 1(5), 557–559.
- Keena M. A., Moore P. M., Bradford G. 2021. Effects of temperature on *Anoplophora chinensis* (Coleoptera: Cerambycidae) adult survival, reproduction, and egg hatch. *Forests*, 12(4), 432.
- Kethidi D.R., Roden D.B., Ladd T.R., Krell P.J., Retnakaran A., Feng Q., 2003. Development of SCAR markers for the DNA-based detection of the Asian long-horned beetle, *Anoplophora glabripennis* (Motschulsky). *Arch. Insect Biochem*, 52: 193–204.
- Klausnitzer B., Klausnitzer U., Wachmann E., Hromádko Z. 2016. Die Bockkäfer Mitteleuropas. Cerambycidae. Band 1: *Biologie und Bestimmung. Die Neue Brehm Bücherei*, 499(1): 3–30.
- Kojima K., Hayashi M. 1969. Longicorn Beetles. *Insect's Life in Japan 1: i–xxiv + 1–295*, 56 pls. *Osaka, Hoikusha*.
- Kolbe H.J. 1886. Beiträge zur Kenntniss der Coleopteren-Fauna Koreas, bearbeitet auf Grund der von Herr Dr. C. Gottsche während der Jahre 1883 und 1884 in Korea veranstalteten Sammlung; nebst Bemerkungen über die zoogeographischen Verhältnisse dieses Faunengebiets und Untersuchungen über einen Sinnesapparat im Gaumen von *Misolampidius morio*. *Archiv für Naturgeschichte, Berlin*, 52(1): 139–240, pls X–XI.
- Komazaki S., Sakagami Y., Jolly G.M., Seber G.A.F., 1989. Capture-recapture study on the adult population of the white spotted longicorn beetle, *Anoplophoramalasiaca* (Thomson) (Coleoptera: Cerambycidae), in a citrus orchard. *Appl. Entomol. Zool.*, 24: 78–84.

- Kusama K. 1973. A List of Ecological and Distributional Data for the Japanese Cerambycidae. *New Insect Collecting 3 (Supplement): 1–159*.
- Lacordaire J.T. 1869. Natural History of Insects. Genera of Coleoptera or methodical and critical exposition of all the genera proposed so far in this order of insects. Family of longhorned beetles (continuation). *Paris. Roret Encyclopedic Bookstore, 9(1): 1–409*.
- Lazarev M.A. 2019a. Catalogue of Bhutan Longhorn beetles (Coleoptera, Cerambycidae). *Humanity space – International Almanac, 8(2): 141–198*.
- Lazarev M.A. 2019b. Species group taxa of Longhorned beetles (Coleoptera, Cerambycidae) described by V.I. Motschulsky and their types. *Humanity space – International Almanac, 8(1): 6–70, 136 figs*.
- Lazarev M.A. 2019c. Holotypes and lectotypes of longhorned beetles (Coleoptera, Cerambycidae) stored at the Zoological Museum Moscow State University. *Humanity space – International Almanac, 8(10): 1210–1359*.
- Lethmayer C. 2013. First data on the dispersal and potential spread of *Anoplophora* spp. *Journal of Entomological and Acarological Research, 45(1): 7*.
- Li G., Gao R., Smith M., 2004. Study on dispersal of *Anoplophora glabripennis* (Motsch.) (Coleoptera: Cerambycidae) population. In: *Proceedings of the 15th International Plant Protection Congress, Beijing, China: 468*.
- Li J., Jiroux E., Zhang X., Lin L., 2013. Checklist of some Cerambycidae collected in North Korea (Coleoptera, Cerambycidae). *Les Cahiers Magellanes, 11: 76–8*.
- Li F., Zhang Y.-L., Wang X.-Y., Cao L.-M., Yang Zh.-Q., Gould J.-R., Duan J.J., 2020. Discovery of Parasitoids of *Anoplophora glabripennis* (Coleoptera: Cerambycidae) and Their Seasonal Abundance in China Using Sentinel Host Eggs and Larvae. *Journal of Economic Entomology, 113: 1–10, 6 figs*.
- Lim J., Jung S.-Y., Lim J.-S., Jang J., Kim K.-M., Lee Y.-M., Lee B.-W. 2014. A Review of Host Plants of Cerambycidae (Coleoptera: Chrysomeloidea) with new Host Records for Fourteen Cerambycids, Including the Asian Longhorn Beetle (*Anoplophora glabripennis* Motschulsky), in Korea. *Korean Journal of Applied Entomology, 53(2): 111–133, 4 figs*.
- Lin M.Y., Tavakilian G.L. 2019. Chrysomeloidea, Cerambycidae, Lamiinae. In Lin Meiting & Yang Xingke editors, Science Press (Beijing). *Catalog of Chinese Coleoptera, 9: i–xxii + 1–575*.
- Lin M. Y., Perissinotto R., Clennell L. 2021. Census of the longhorn beetles (Coleoptera, Cerambycidae and Vesperidae) of the Macau SAR, China. *ZooKeys, 1049, 79*.
- Lingafelter S.W., Hoebeke R.E. 2002. Revision of the Genus *Anoplophora* (Coleoptera: Cerambycidae). *The Entomological Society of Washington, Washington DC 238 pp, 67 figs, 34 pls, 14 maps*.
- Lingafelter S.W., Nearn E.H., Tavakilian G.L., Monné M.A., Biondi, M. 2014. Longhorned Woodboring Beetles (Coleoptera: Cerambycidae and Disteniidae) Primary Types of the Smithsonian Institution. *Smithsonian Institution Scholarly Press, Washington DC: v–xviii + 1–390, 187 figs*.
- Löbl I. & Smetana A. 2010. Catalogue of Palaearctic Coleoptera. Volume 6, Chrysomeloidea. I. Löbl & A. Smetana editors, *Apollo books, Stenstrup, 6: 1–924*.
- Loomans A.J.M., Wessels-Berk B.F., Copini P., Mentink N.J.B., de Hoop M.B., den Hartog W.G.S.A. 2013. Import-inspections, surveys, detection and eradication of the longhorn beetles *Anoplophora chinensis* and *A. glabripennis* in The Netherlands. *Journal of Entomological and Acarological Research 2013; volume 45(s1): 8*.
- Macleod A., Evans H.F., Baker R.H.A. 2002. An analysis of pest risk from an Asian longhorn beetle (*Anoplophora glabripennis*) to hardwood trees in the European community. *Crop Prot., 21: 635–645*.

- Makihara H. 1976. Description of a new species of *Anoplophora* from Ogasawara Islands (Coleoptera: Cerambycidae). *Bulletin of the Japan Entomological Academy*, 10(1): 9–12, 4 figs.
- Mankin R.W., Smith M.T., Tropp J.P., Atkinson E.B., Jong D.-Y. 2008. Detection of *Anoplophora glabripennis* larvae in different host trees and tissues by automated analyses of sound-impulse frequency and temporal patterns. *J. Econ. Entomol.*, 101: 838–849.
- Matsushita M. 1933. Beitrag zur Kenntnis der Cerambyciden des japanischen Reichs. *Journal of the Faculty of Agronomy of Hokkaido Imperial University, Sapporo*, 34(2), 157–445.
- Maspero M., Hérard F., Smith M., Jucker C., D'Angelo G., Colombo M. 2013. An overview of the ongoing research on *Anoplophora chinensis* in Lombardy Region. A special focus on biological control studies and use of sentinel trees technique. *Journal of Entomological and Acarological Research*, 45(s1): 36.
- Maspero, M., C. Jucker, and M. Colombo. 2007. First record of *Anoplophora glabripennis* (Motschulsky) (Coleoptera Cerambycidae Lamiinae, Lamiini) in Italy. *Boll. Zool. Agric. Bachic. ser. II*, 39: 161–164.
- McKenna D.D., Scully E.D., Pauchet Y., Hoover K., Kirsch R., Geib S.M., ... & Richards, S. 2016. Genome of the Asian longhorned beetle (*Anoplophora glabripennis*), a globally significant invasive species, reveals key functional and evolutionary innovations at the beetle-plant interface. *Genome biology*, 17(1), 1–18.
- Menier J.-J. 2003. La chasse estouverte !Présence d'un capricorne asiatique indésirable en France: *Anoplophora glabripennis* (Motschulsky, 1853) (Col., Cerambycidae, Lamiinae). *Bulletin de la Société entomologique de France, Paris*, 108(3): 276, 1 fig.
- Mitra B., Chakraborti U., Mallick K., Bhau-mik S., Das P. 2017. An updated list of cerambycid beetles (Coleoptera: Cerambycidae) of Assam, India. *Records of the Zoological Survey of India*, 117(1), 78–90.
- Monne M. Á., Hovore F. Th. 2006. A Checklist of the Cerambycidae, or longhorned wood-boring beetles, of the Western Hemisphere. *Bio Quip Publications: 1–393*.
- Motschulsky V. I., 1854. Diagnoses de Coléoptères nouveaux, trouvés par M. M. Tatarinoff et Gaschkéwitsch aux environs de Pékin. *Études Entomologiques*, 2 [1853]: 44–51.
- Motschulsky V. I., 1861. II. Entomologiespéciale. Insectes du Japon. *Études Entomologiques*, 9: 4–39.
- Motschulsky V.I. 1866. Catalogue des insectes reçus du Japon. *Bulletin de la Société Impériale des Naturalistes de Moscou*, 39(1): 163–200.
- Mouthiez J., Peru L., 2008. Liste des Longicornes observés dans le département du Loiret (Coleoptera Cerambycidae). *L'Entomologiste, Paris*, 64(2): 109–111.
- Nehme M.E., Keena M.A., Meng P., Trotter R.T., De Moraes C., Mescher M., McFarland C., Sawyer A., Hoover K. 2013. Development of a trapping system for Asian longhorned beetle using semiochemicals. *Journal of Entomological and Acarological Research 2013; volume 45(s1): 20*.
- Nehme M.E., Trotter R.T., Keena M.A., McFarland C., Coop, J., HullSanders H. M., ... & Hoover K. 2014. Development and evaluation of a trapping system for *Anoplophora glabripennis* (Coleoptera: Cerambycidae) in the United States. *Environmental entomology*, 43(4), 1034–1044.
- Newman E. 1842. Cerambyciturum Insularum Manillarum Dom. Cuming captorum numeratio digesta. *The Entomologist, London*, 17: 275–277.
- Niisato T. 1994. Collecting Records of Cerambycid Beetles (Coleoptera, Cerambycidae) from Shikine-jima of the Izu Islands. *Elytra, Tokyo*, 22(1): 158.

- Nonfried A.F. 1982. Weitere Beiträge zur Käferfauna von Südasien und Neuguinea. *Berliner Entomologische Zeitschrift*, 36(2), [1891]: 359–380.
- Nowak D.J., Pasek J.E., Sequeira R.A., Crane D.E., Mastro V.C. 2001. Potential effect of *Anoplophora glabripennis* (Coleoptera: Cerambycidae) on urban trees in the United States. *J. Econ. Entomol.*, 94: 116–122.
- Ohbayashi N. 2001. Distribution of the *Anoplophora* Species (Coleoptera, Cerambycidae, Lamiinae) in Okinawa Island, Southwest Japan. *Elytra*, Tokyo, 29(2): 284–290, 6 figs.
- Ohbayashi B. 2018. A New Subspecies of *Anoplophora horsfieldii* (Hope, 1842) (Coleoptera: Cerambycidae: Lamiinae). *The Japanese Journal of Systematic Entomology*, 24(1): 39–42, 3 figs.
- Ohbayashi N., Niisato, T. 2007. Longicorn Beetles of Japan. *Tokai University Press, Kanagawa*: v–xii + 1–818.
- Ohbayashi N., Niisato T., Chou W.I. 2009. Note on *Anoplophora wusheana* Chang from Taiwan (Coleoptera, Cerambycidae, Lamiinae). *Special Bulletin Japanese Society of Coleopterology*, Tokyo, 7, 325–328.
- Ohbayashi N., Ogawa J., Su Z.H. 2009. Phylogenetic Analysis of the Lamiine Genus *Anoplophora* and its Relatives (Coleoptera, Cerambycidae) Based on the Mitochondrial COI Gene. *Special Bulletin of the Japanese Society of Coleopterology*, Tokyo, (7): 309–324.
- Özdikmen H. 2017a. A complete list of invasive alien Longhorned Beetles species for Turkey (Coleoptera: Cerambycidae). *Munis Entomology & Zoology*, 12(2): 508–515.
- Özdikmen H. 2017b. Introduction and establishment of three species of the genus *Anoplophora* Hope in Turkey (Coleoptera: Cerambycidae). *Munis Entomology & Zoology*, 12(2): 481–485.
- Özdikmen H. 2021. A naked list of longhorned beetles preferring *Quercus* species as host plant in Turkey (Coleoptera: Cerambycidae). *Munis Entomology & Zoology*, 16(1): 439–456.
- Pacini A. 2011. Catálogo de escarabajos de cuernos largos (Coleoptera, Cerambycidae) de la colección de invertebrados del Museo Provincial de Ciencias Naturales “Florentino Ameghino”. *Museo Provincial de Ciencias Naturales “Florentino Ameghino”*, Santa Fe. Serie, 26: 1–40.
- Pajovic I., Petric D., Bellini R., Pajovic L., Quarrie S. 2017. First record of *Anoplophora glabripennis* (Coleoptera: Cerambycidae) in Montenegro. *Baltic Forestry*, 23(3), [46]: 706–710.
- Pic M. 1902. Presumed new species or varieties from China. *Materials for use in the study of Longhorn beetles*, 4(1): 28–32.
- Pic M. 1907. Coléoptères exotiques nouveaux ou peu connus (Suite). *L'Échange, Revue Linnéenne*, 23(271): 151–152.
- Pic M. 1925. Nouveautés diverses. *Mélanges Exotico-Entomologiques*, 43: 1–32.
- Pic M. 1925. Coléoptères exotiques en partie nouveaux (Suite.). *L'Échange, Revue Linnéenne*, 41(419): 3–4.
- Pic M. 1926. Nouveautés diverses. *Mélanges Exotico-Entomologiques*, 46: 1–32.
- Pic M. 1927. Séance du 23 novembre 1926. Remarques critiques, synonymies et diagnoses [Col.]. *Bulletin de la Société Zoologique de France, Paris*, 51(5), [1926]: 451–455.
- Pic M. 1931. On the genus *Tibetobia* Friv. and some other Lamiens (Coleoptera). *Entomologisches Nachrichtenblatt, Troppau*, 5(2): 48–49.
- Pic M. 1934. Nouveautés diverses. *Mélanges Exotico-Entomologiques*, 63: 1–36.
- Pic M. 1936. Nouveautés diverses. *Mélanges Exotico-Entomologiques*, 67: 1–36.

- Pic M., 1953. Coléoptères du globe (suite). *L'Échange, Revue Linnéenne*, 69(531): 2–4.
- Pluess K. 2013. First findings of *Anoplophora glabripennis* in Switzerland. *Journal of Entomological and Acarological Research 2013; volume 45(s1): 21*.
- Ponpinij S., Hormchan P., Rojanavongse V. 2011. Records of Subfamily Lamiinae (Coleoptera: Cerambycidae) in Northern Thailand. *Kasetsart Journal (Natural Science)*, 45: 841–855, 5 pls.
- Pu F. 1992. Insects of the Hengduan Mountains Region, Volume 1. The Comprehensive Scientific Expedition to the Qinghai-Xizang Plateau. Coleoptera: Disteniidae and Cerambycidae. *Science Press, Beijing*, 5: xii + 1–865.
- Roselli M., Bianchi A., Nuccitelli L., Peverieri Sabbatini G., Roversi P.F. 2013. Control strategies of *Anoplophora chinensis* in an area of considerable artistic and archaeological value in Rome. *Journal of Entomological and Acarological Research 2013; volume 45(s1): 27–29*.
- Ritsema C.Z. 1880. Description of a Sumatran species of the longicorn genus *Callophora*, Thoms. *Notes from the Leyden Museum*, 2(4): 246–248.
- Ritsema C.Z. 1881. Description of a new species of the longicorn genus *Melanauster*, Thoms. *Notes from the Leyden Museum*, 3(1): 39–40.
- Rondon J.A. & Breuning S. 1970. Lamiines du Laos. *Pacific Insects Monograph*, 24: 315–571, 54 figs.
- Roguet J.-Ph. 2004–2022. Lamiines du Monde / Lamiines of World. <https://lamiinae.org/about.html> [downloaded: January – June 2022].
- Samuelson G.A. 1965. The Cerambycidae (Coleopt.) of the Ryukyu Archipelago II, Lamiinae. *Pacific Insects*, 7(1): 82–130.
- Sabbatini G.P., Bertini G., Furlan P., Cortini G., Roversi P.F. 2012. *Anoplophora chinensis* (Forster) (Coleoptera Cerambycidae) in the outbreak site in Rome (Italy): experiences in dating exit holes. *Redia*, 95: 89–92.
- Sabbatini Peverieri G., Bertini G., Furlan P., Cortini G., Roversi P.F. 2013. Dating exit holes of *Anoplophora chinensis* in an outbreak site in Rome, Italy. *Journal of Entomological and Acarological Research*, 45(s1): 38.
- Sabol O., Smetana M., Kubinec V., Martinu I. 2016. *Phymatodes puncticollis*, *Anoplophora glabripennis* a *Dorcadion arenarum* – třinové druhy tes aříků (Coleoptera: Cerambycidae) pro Slovensko. *Entomofauna Carpathica*, 28(1): 19–22, 3 figs.
- Schultze W.C.M. 1923. Eleventh Contribution to the Coleoptera Fauna of the Philippines. *The Philippine Journal of Science*, 23(6): 595–607.
- Sjöman H., Östberg J., Nilsson J. 2014. Review of host trees for the wood-boring pests *Anoplophora glabripennis* and *Anoplophora chinensis*: an urban forest perspective. *Arboriculture & Urban Forestry*, 40(3), 143–164.
- Ślipinski S. A., Escalona H. E. 2013. Australian Longhorn Beetles (Coleoptera: Cerambycidae). Volume 1, Introduction and Subfamily Lamiinae. *Csiro publishing: i–xviii + 484, 221 figs*.
- Smith M.T., Bankroft J., Li G., Gao R., Teale S. 2001. Dispersal of *Anoplophora glabripennis*. *Environ. Entomol.*, 30: 1036–1040.
- Smith M.T., Turgeon J.J., De Groot P., Gasman B. 2009. Asian longhorned beetle *Anoplophora glabripennis* (Motschulsky): lessons learned and opportunities to improve the process of eradication and management. *Am. Entomol.*, 55: 21–25.
- Strangi A., Sabbatini Peverieri G., Roversi P.F. 2013. A new perspective for *Anoplophora chinensis* (Forster) (Coleoptera Cerambycidae) infested plant diagnosis by molecular analysis of larval frass. *Journal of Entomological and Acarological Research 2013; volume 45(s1): 18–19*.

- Švacha P., Lawrence J. F. 2014. Arthropoda: Insecta: Coleoptera. Volume 3: Morphology and Systematics (Phytophaga). 2.4 Cerambycidae Latreille, 1802. In *Walter de Gruyter, Handbook of Zoology, 3: i–xii + 1–676, 465 figs. Edited by Richard A.B. Leschen & Rolf G. Beutel.*
- Tavakilian G., Chevillotte H. 2022. Base de données Titan sur les Cerambycides ou Longicornes. <http://titan.gbif.fr/index.html> [downloaded: January – June 2022].
- Thomson J. 1856. Description d'une *Cicindela* et de deux Longicornes. *Revue et Magasin de Zoologie pure et appliquée, Paris, 2(8): 528–530.*
- Thomson J., 1857. Description de cérambycides nouveaux ou peu connus de ma collection. *Archives Entomologiques, Paris, 1: 291–320.*
- Thomson J. 1860. Essai d'une classification de la famille des cérambycides et matériaux pour servir à une monographie de cette famille. *Paris, 404 pages, 3 pls.*
- Thomson J. 1865. Diagnoses d'espèces nouvelles qui seront décrites dans l'appendix du systema cerambycidarum. *Mémoires de la Société Royale des Sciences de Liège, 19: 541–578.*
- Thomson J. 1868. Matériaux pour servir à une révision des lamites (Cerambycides, Col.). *Physis Recueil d'Histoire Naturelle, Paris, 2(6): 146–200.*
- Thomson J. 1878. Typi cerambycidarum (3e mémoire). *Revue et Magasin de Zoologie, Paris (3), 6(41): 45–68.*
- Tippmann F.F. 1953. Lamiinen mit Interferenz-Farbenspiel (Coleoptera, Cerambycidae, subfam. Lamiinae). *Entomologische Blätter für Biologie und Systematik der Käfer, 49: 148–153.*
- Tomiczek C., Krehan H., Menschhorn P. 2002. Dangerous Asiatic longicorn beetle found in Austria new danger for our trees? *Allg. Forst Z. Waldwirtschaft Umweltvorsorge, 57: 52–54.*
- Tomiczek C.U. Hoyer-Tomiczek, Schroeder T. 2007. *Anoplophora glabripennis* in Austria and in Germany (pp. 8–9). In *International Symposium Anoplophora chinensis & A. glabripennis: Phyto-Sanitary Management and Research.*
- Tong Qiu Y., van Meggelen J., Loomans A. 2013. Application of several technologies in the production chain in China to control the citrus longhorn beetle *Anoplophora chinensis*. *Journal of Entomological and Acarological Research 2013; volume 45(s1): 39.*
- Turgeon J. J., Orr M., Grant C., Wu Yu., Gasman B. 2015. Decade-Old Satellite Infestation of *Anoplophora glabripennis* Motschulsky (Coleoptera: Cerambycidae) Found in Ontario, Canada outside Regulated Area of Founder Population. *The Coleopterists' Bulletin, 69(4): 674–678, 2 figs.*
- Villa G., Bonanomi L., Guarino D., Pozzi L., Maspero M. 2013. Use of the electronic nose for the detection of *Anoplophora chinensis* (Forster) on standing trees: preliminary results. *Journal of Entomological and Acarological Research 2013; volume 45(s1): 13–14.*
- Vitali F. 2010. Taxonomic and faunistic notes about some African Cerambycids belonging to the National Museum of Natural History of Luxembourg (Coleoptera, Cerambycidae). *Lambillionea, 110(2), 1: 179–184.*
- Voet J. E. 1781. *Catalogus Systematicus Coleopterorum. La Haye, Bakkhuysen, 2: 1–254.*
- Vukadin A. 2013. Visual inspection and application of new detection method on discovering low *Anoplophora chinensis* (Forster) population density in Croatia. *Journal of Entomological and Acarological Research 2013; volume 45(s1): 40.*
- Wallin H., Kvamme T. Nýlander U. 2014. A revision of the genus *Nemophas* Thomson, 1864 (Coleoptera: Cerambycidae), with descriptions of a new subgenus *Pilomophas* and a new genus *Nemoplophora*. *Biodiversity, Biogeography and*

- Nature Conservation in Wallacea and New Guinea*, 2: 407–436, 18 pls., 84 fig.
- Wang C.H., He L. 2021. *Anoplophora huangjianbini* sp. nov. from Fujian and Guangxi, China (Coleoptera: Cerambycidae: Lamiinae). *Biodiversity Data Journal*, 9 (e70936): 1–11.
- Wang W.D., Liu Y.N., Bao S., Ogura N., Maruda H., 1999. Research of the enemy of *Anoplophora glabripennis* and *A. nobilis* in Ningxia. *Journal of Beijing Forestry University*, 21: 90–93.
- Westwood J.O. 1848. A selection of some of the rarer and more beautiful species of insects natives of India and the adjacent islands, the greater portion of which are now for the first time described and figured. Cabinet of Oriental Entomology. *William Smith, London*: 1–88, 42 pls.
- Williams D.W., Lee H.-P., Kim I.-K. 2004. Distribution and abundance of *Anoplophora glabripennis* (Coleoptera: Cerambycidae) in natural Acer stands in South Korea. *Environ. Entomol.*, 33: 540–545.
- White A. 1858. Descriptions of *Monohammus Bowringii*, *Batocera Una*, and other Longicorn Coleoptera, apparently as yet unrecorded. *The Proceedings of the Zoological Society of London*, 26: 398–413, pl. LIII, figs 1–7. <http://www.biodiversitylibrary.org/item/100585>.
- Wright Sh., 2000. The Asian Longhorn Beetle *Anoplophora glabripennis* Motschulsky (Cerambycidae) – could it become established in Britain? *The Coleopterist*, 9(2): 94–95.
- Wu W., Jiang S. 1998. The *glabripennis* species group of the genus *Anoplophora* in China. *Acta Entomol. Sinica.*, 41: 284–291.
- Zampini M., Vettorazzo M., Faccoli M., Favaro R., Dal Cin I., Coppe M. 2013. *Anoplophora glabripennis* outbreak management in Veneto Region, Italy. *Journal of Entomological and Acarological Research*, 45(s1): 30.
- Xie G.L., Huang J., Wang W., Xiang L. 2015. First record of the genus *Mimonemophas* Breuning (Coleoptera: Cerambycidae: Lamiinae: Monochamini) from China with description of a new species. *Zootaxa, Auckland*, 4057(4): 595–600, *Magnolia Press, New Zealand*.
- Xu P., Neng N. 2010. Coloured Illustrations of Longhorned Beetles in Mongolian Plateau. *Chinese Agricultural University Press: i–xiv + 1–150*.
- Yan J.J. 1985. Research on distribution of basicosta white spotted longicorn in east China. *Journal of North Eastern Forestry College, China*, 13: 62–69.
- Yang S., Yang W., Tian Y. 2020. Description of *Anoplophora fanjingensis* sp. n. (Coleoptera, Cerambycidae, Lamiinae) from Southwest China. *Biodiversity Data Journal*, 8 (e51752): 2–9, 5 figs.
- Yasui H., Fujiwara-Tsujii N., Wakamura S. 2011. Volatile attractant phytochemicals for a population of white-spotted longicorn beetles *Anoplophora malasiaca* (Thomson) (Coleoptera: Cerambycidae) fed on willow differ from attractants for a population fed on citrus. *Chemoecology*, 21: 51–58.
- Yu S.K., Nara H., Chu Y.I. 2002. The Longicorn beetles of Taiwan. *Muh Sheng Museum of Entomology. Iconographical Book of Wildlife of Taiwan*, 3: 1–151.

Received: 14.07.2022.

Accepted: 01.10.2022.